

How to define, monitor and deal with land abandonment

The Galician experience

Eduardo Corbelle Rico

Land Laboratory (<http://laborate.usc.es>)
University of Santiago de Compostela

eduardo.corbelle@usc.es

2nd International Workshop
on Land Consolidation and Land Banking
Budapest, June 8, 2011

- 1 Definition
- 2 Significance & Location
- 3 Driving forces
- 4 Impacts
- 5 Policy & Instruments

Definition

Regional Law 7/2007

- 1 Uncultivated land
- 2 Abandoned land
- 3 Neglected land



Uncultivated land

- “Land used for agricultural purposes until recent times but not currently cultivated, with a noticeable cover of shrubs”
- Area covered by shrubs $> 50\%$

Abandoned land

- “Land not subject to any cultivation practice (including conservation agriculture), nor intended for grazing”
- Area covered by shrubs $> 75\%$

Uncultivated land

- “Land used for agricultural purposes until recent times but not currently cultivated, with a noticeable cover of shrubs”
- Area covered by shrubs $> 50\%$

Abandoned land

- “Land not subject to any cultivation practice (including conservation agriculture), nor intended for grazing”
- Area covered by shrubs $> 75\%$

Neglected land

Any of the previous cases, when they pose a threat to neighbour owners:

- Risk of wildfires
- Risk of erosion
- Propagation of pests

- 1 Definitions established for regulation of fines
- 2 Time frame is left undefined (but fallow land explicitly excluded)

Neglected land

Any of the previous cases, when they pose a threat to neighbour owners:

- Risk of wildfires
- Risk of erosion
- Propagation of pests

- 1 Definitions established for regulation of fines
- 2 Time frame is left undefined (but fallow land explicitly excluded)

Significance

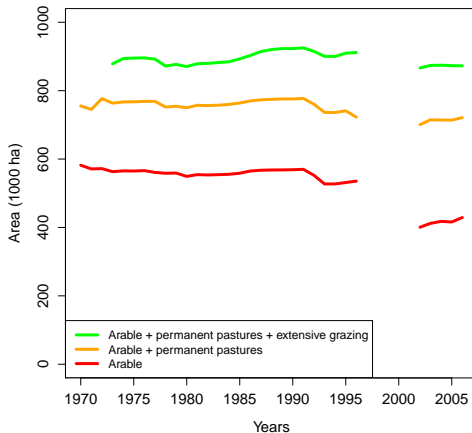
How much abandoned land?

Difficult to assess:

- Several cartographic / statistical sources available
- Disagreeing legends, scales, scope

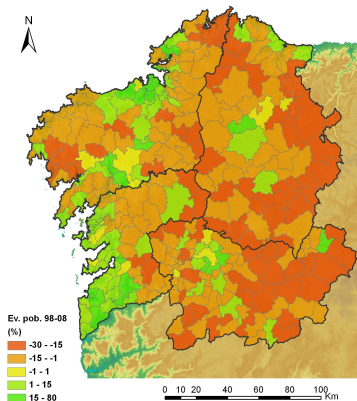
Significance

How much land taken out of agricultural use?

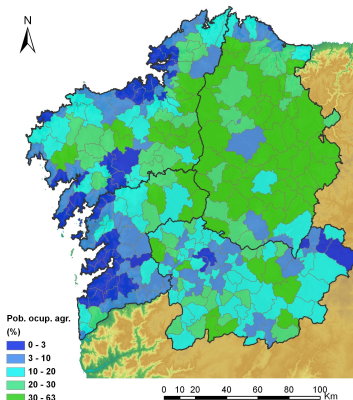


Source: Agric. Statistical Yearbooks, Spanish Min. of Agric.

Southern provinces



Population at municipal level
(1998-2008)



Work in agriculture in 2001
(% of active pop.)

Driving forces

- 1 Farm closing
- 2 High fragmentation of property
- 3 Low mobility of land market



Driving forces

1. Farm closing

Small-scale, family farms

- 433,000 farms in 1962
- 270,000 farms in 1999

Lack of viability

- Economic
- Demographic



Driving forces

1. Farm closing

Small-scale, family farms

- 433,000 farms in 1962
- 270,000 farms in 1999

Lack of viability

- Economic
- Demographic



Driving forces

2. Fragmentation of property

Basic figures

- 13 M parcels
(in 2.9 M ha)
- 1.6 M owners
(2.7 M inhabitants)

Two kinds of fragmentation

- Many owners
- Many parcels / owner



Driving forces

2. Fragmentation of property

Basic figures

- 13 M parcels
(in 2.9 M ha)
- 1.6 M owners
(2.7 M inhabitants)

Two kinds of fragmentation

- Many owners
- Many parcels / owner



Paradigm of agricultural economics in Galicia

- Based in data from Agricultural Census
- Relative stagnation of farm average area

(Some) Proposed reasons

- Land as asset
- (Expected) Demand for urban use
- Competition of forest use
- Low taxes on land

Paradigm of agricultural economics in Galicia

- Based in data from Agricultural Census
- Relative stagnation of farm average area

(Some) Proposed reasons

- Land as asset
- (Expected) Demand for urban use
- Competition of forest use
- Low taxes on land

What does exactly “**low mobility**” refer to?

- Sale
- Rental (formal **written** agreement)

Non-written (**precarious ?**) agreements are common

- Case study: 80% of parcels receiving CAP subsidies

Farmers do not necessarily perceive them as “precarious”

What does exactly “**low mobility**” refer to?

- Sale
- Rental (formal **written** agreement)

Non-written (**precarious ?**) agreements are common

- Case study: 80% of parcels receiving CAP subsidies

Farmers do not necessarily perceive them as “precarious”

- 1 Written agreements
- 2 Oral agreements (also legally binding)
- 3 **Precarious** agreements (no time-frame defined, no guarantees)

Perceived as

- “Loss of a richness of social interest that a country can not afford” (Law 7/2007)
- Obstacle for enlargement of remaining farms
- Loss of cultural landscapes and HNV farming areas
- Environmental / social / economic problem: wildfires



Vigo, August 2006 (Photo: A. Rodríguez Seijo)

Perceived as

- “Loss of a richness of social interest that a country can not afford” (Law 7/2007)
- Obstacle for enlargement of remaining farms
- Loss of cultural landscapes and HNV farming areas
- Environmental / social / economic problem: wildfires



Vigo, August 2006 (Photo: A. Rodríguez Seijo)

Perceived as

- “Loss of a richness of social interest that a country can not afford” (Law 7/2007)
- Obstacle for enlargement of remaining farms
- Loss of cultural landscapes and HNV farming areas
- Environmental / social / economic problem: wildfires



Vigo, August 2006 (Photo: A. Rodríguez Seijo)

- Zoning regulations
 - Protected agricultural areas (municipal planning)
- Land Bank
- Forest Management Units

- Zoning regulations
 - Protected agricultural areas (municipal planning)
- Land Bank
- Forest Management Units

- Zoning regulations
 - Protected agricultural areas (municipal planning)
- Land Bank
- Forest Management Units

Increase mobility of the land market

- Improve information flow
- Provide guarantees (to owners & tenants)
- Establish reference prizes

- Voluntary basis
- Middleman in rental agreements
(Contracting party)
- Symbolic fee
- Possibility of covering extraordinary expenses
- Does not change property but only tenure



Increase mobility of the land market

- Improve information flow
- Provide guarantees (to owners & tenants)
- Establish reference prizes

- Voluntary basis
- Middleman in rental agreements
(Contracting party)
- Symbolic fee
- Possibility of covering extraordinary expenses
- Does not change property but only tenure

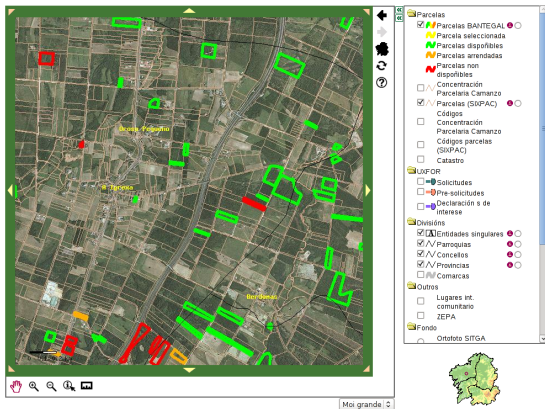


Policy & Instruments

SITEGAL: web-gis for the Land Bank (<http://www.bantegal.com/sitegal/>)

Developed by USC & UdC

- Information flow
- Transparency
- e-Administration
- Based on free software
- Exportable

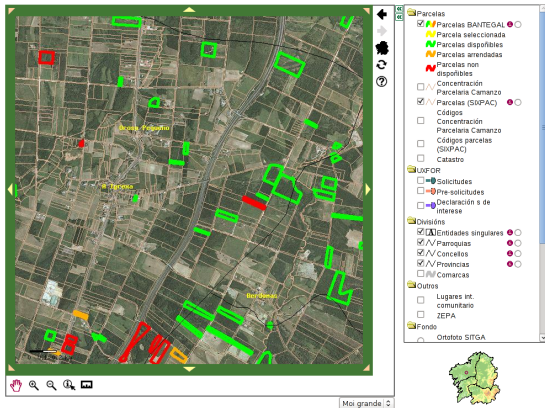


Policy & Instruments

SITEGAL: web-gis for the Land Bank (<http://www.bantegal.com/sitegal/>)

Developed by USC & UdC

- Information flow
- Transparency
- e-Administration
- Based on free software
- Exportable



Thank you for your attention