

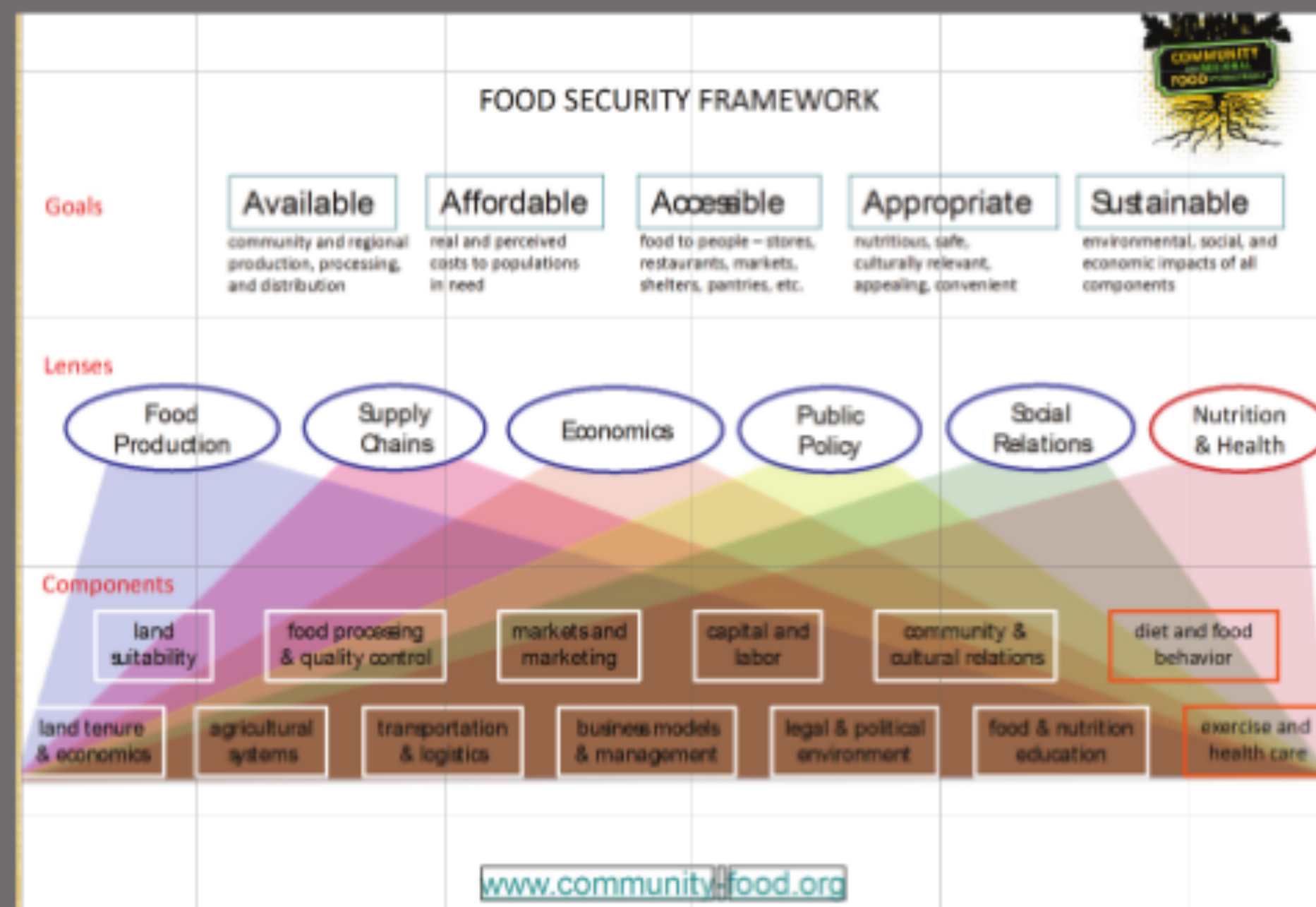
¿THE FOODLANDSCAPE OF LUGO?

ASSIGNMENT

EXCHANGE BETWEEN STUDENTS FROM THE NETHERLANDS AND SPAIN TO PROPOSE A PLAN TO CREATE A LOCAL FOOD SYSTEM IN THE CITY OF LUGO, AIMED AT PROTECTING GREEN AREAS IN THE CITY, FOSTERING FOOD PRODUCTION ACTIVITIES BOTH IN URBAN AND NEARBY RURAL AREAS AND SUGGESTING STRATEGIES TO COMMERCIALIZE LOCAL PRODUCTS.

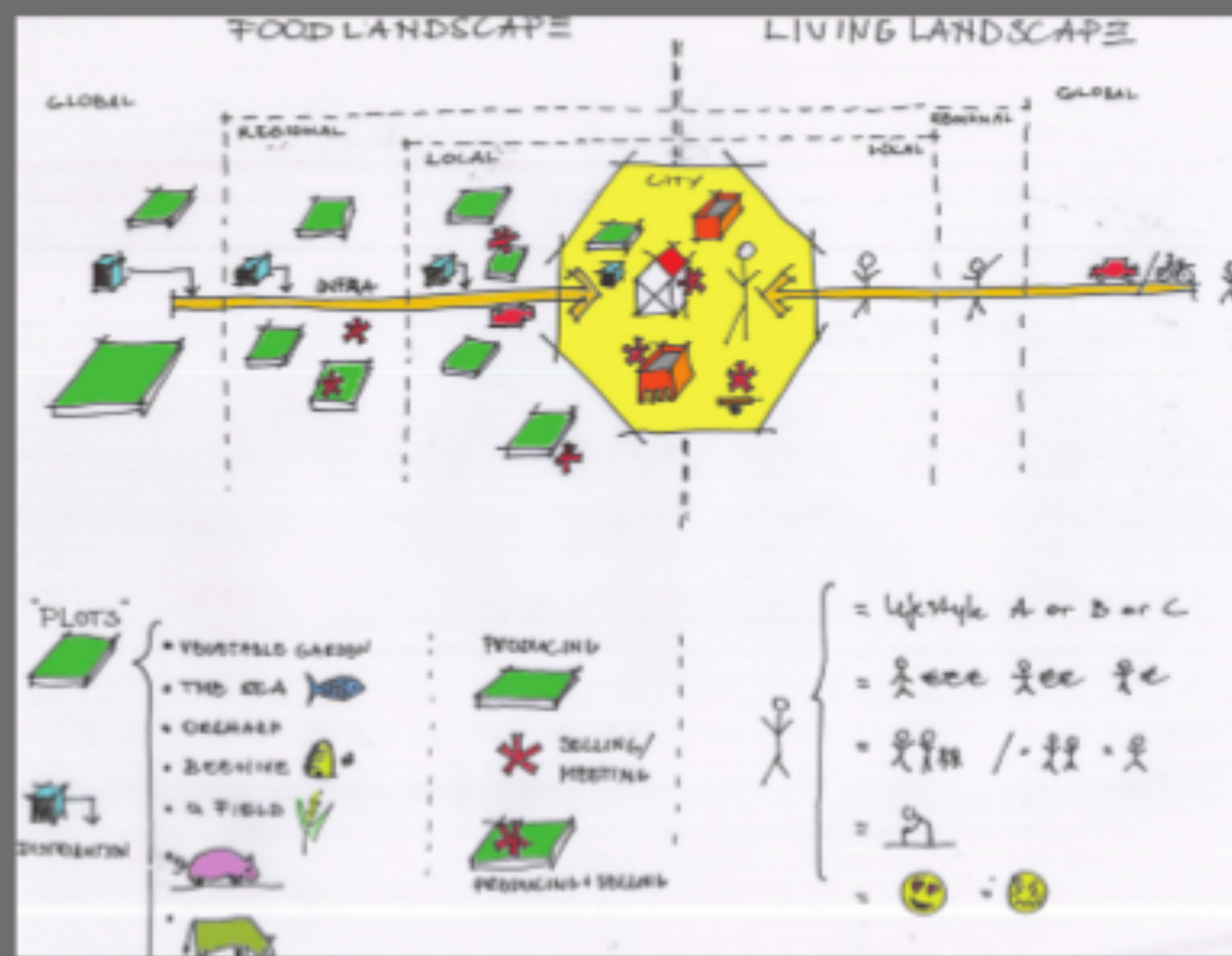
IN SHORT THE STORY OF FOODSYSTEM

BY PROF MORALES



SPATIAL TRANSLATION FOODSYSTEM

BY JOS ULIJN AND RUTH FLEUREN



LUGO



INTERVIEWS ON THE PRAZA THE ABASTOS



"A VEGETABLE GARDEN ON ITS OWN CAN NOT FEED A FAMILY"

"UNCERTAIN SUBSISTENSE, WE DEPEND OF A FEW REGULAR CUSTOMERS"

PROJECT RATO RIVER GARDENS



"THE VEGETABLE GARDENS HAVE AN IMPORTANT SOCIAL FUNCTION, WE FEEL LIKE A FAMILY"

"I TEACH MY KIDS TO GROW VEGETABLES"

"I'M IMPRESSED THAT I GROW MY OWN VEGETABLES"

"UNBELIEVABLE, THERE IS AN WAITING LIST"

INTERVIEWS WITH THE MUNICIPALITY



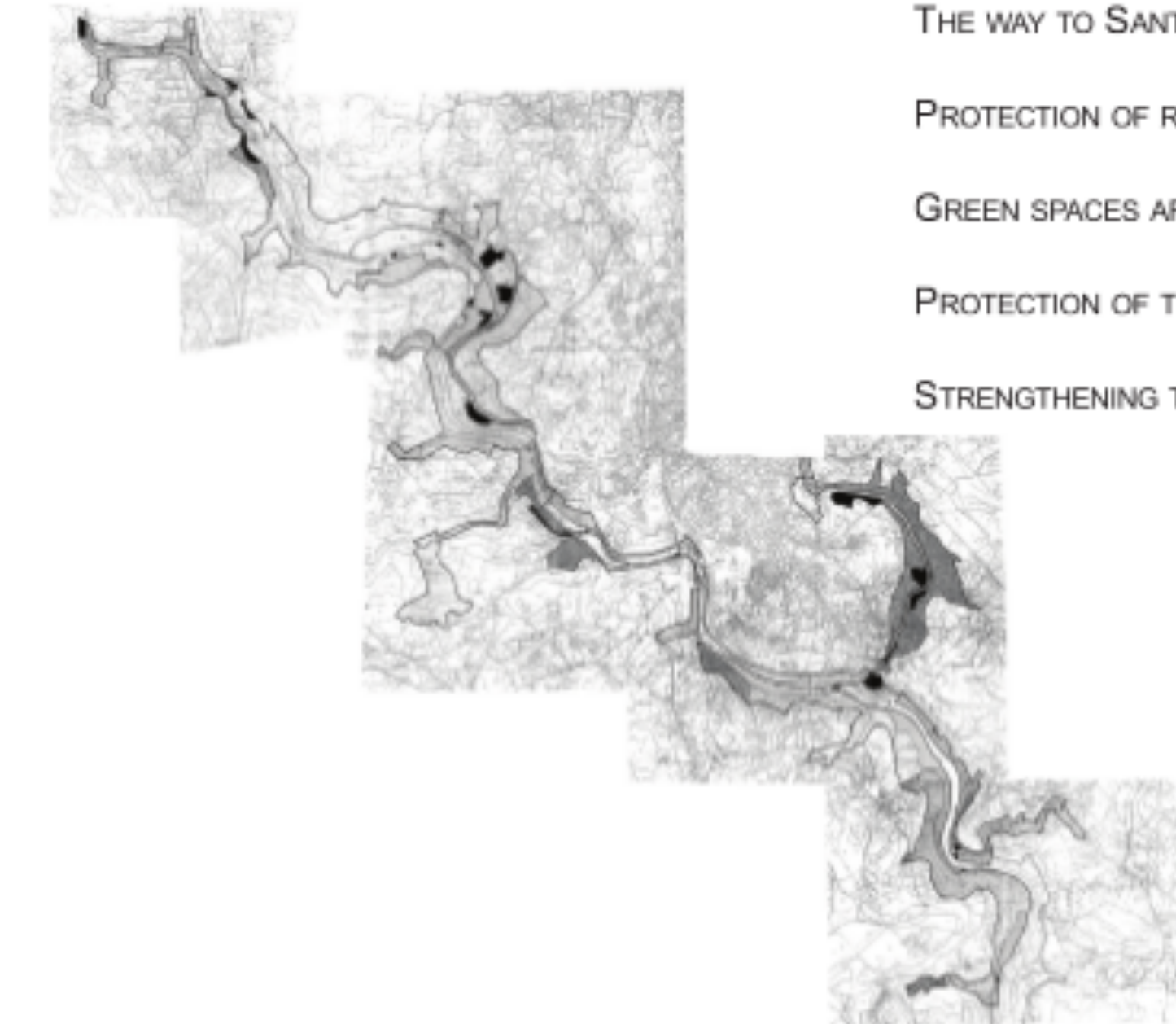
"GETTING THE COUNTRY SITE A LIVE AGAIN BY GIVING THE PEOPLE FROM THE CITY A PLACE IN THE COUNTRY SITE"

FARM VIDA DE ALDEA



"IN THE BEGINNING PEOPLE WERE SCEPTIC BUT NOW PEOPLE OPENED FOR THE INNOVATIVE IDEAS"

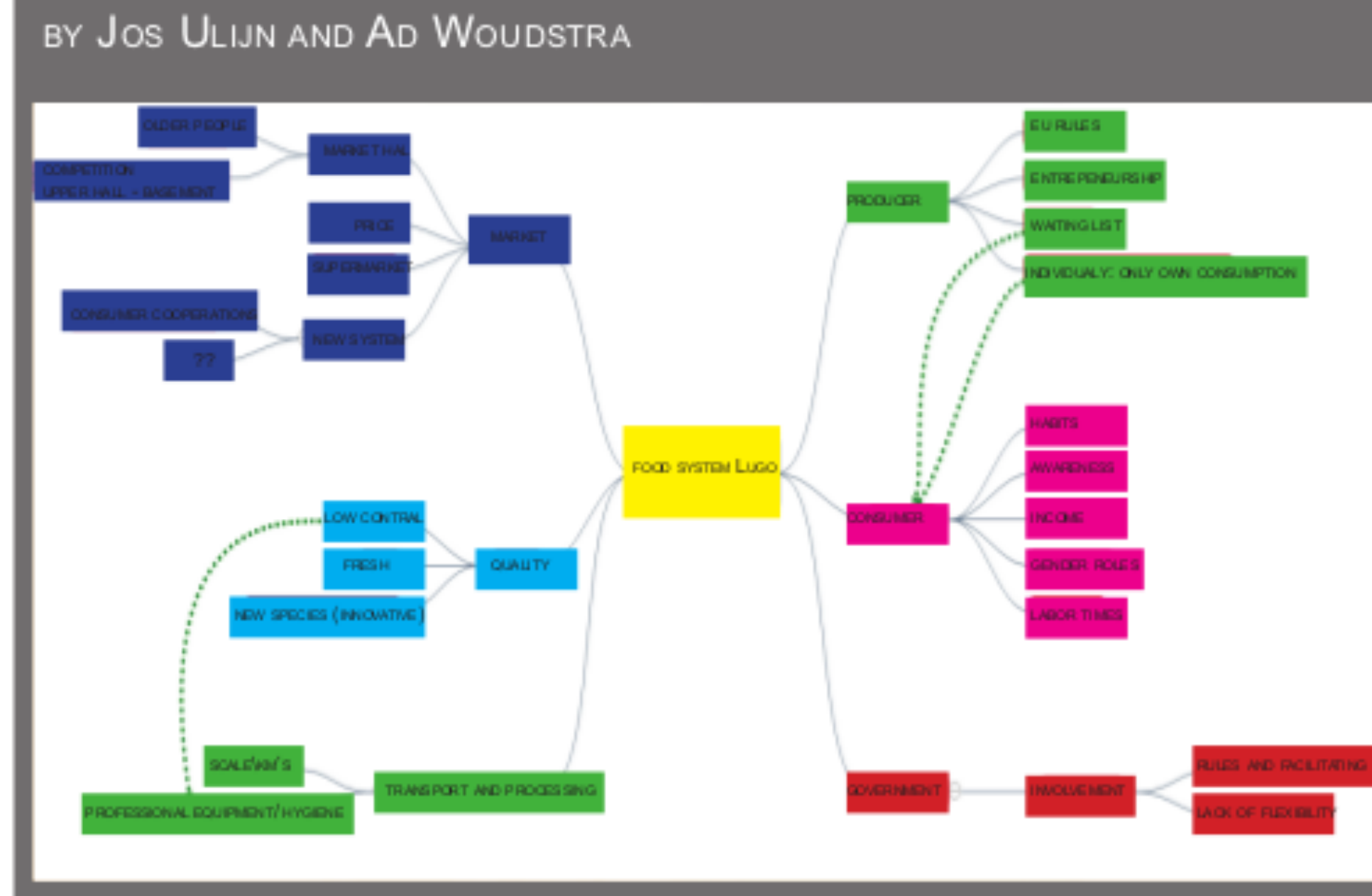
AGENDA 21



THE WAY TO SANTIAGO IS PROTECTED
PROTECTION OF RIVER MINO AND RIVER RATO
GREEN SPACES AROUND THE RIVERS
PROTECTION OF THE LAND OUTSIDE THE CITY
STRENGTHENING THE ROLE OF AGROBUSINESS

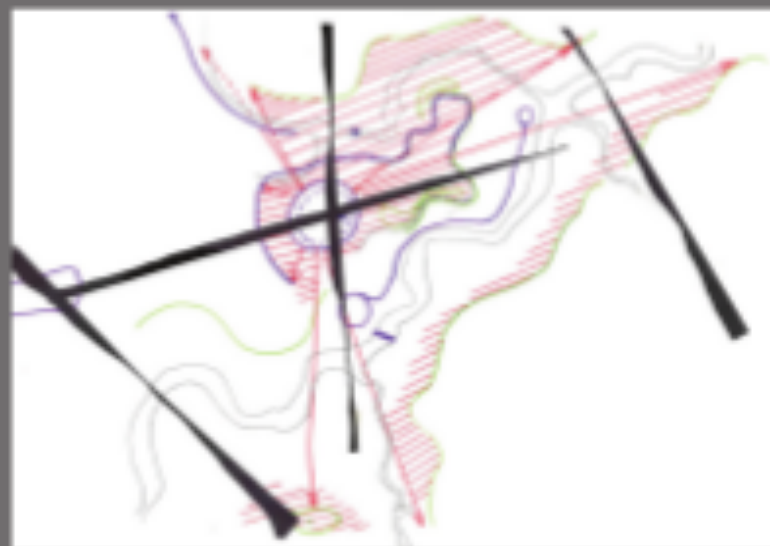
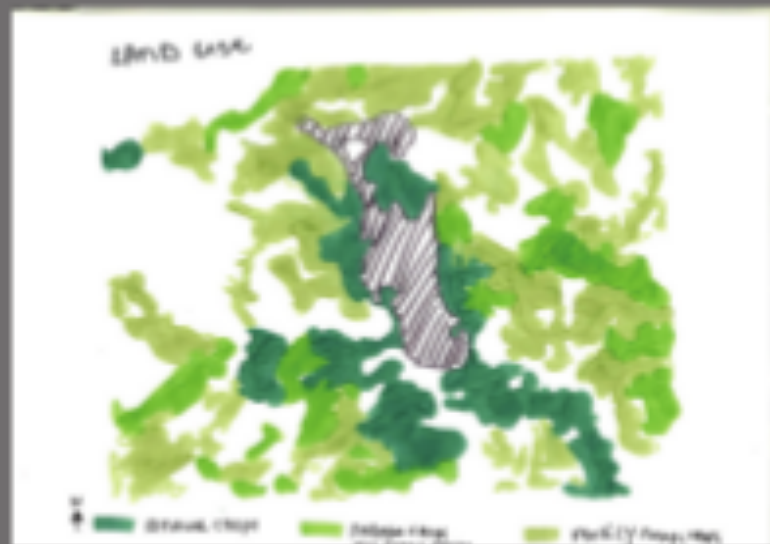
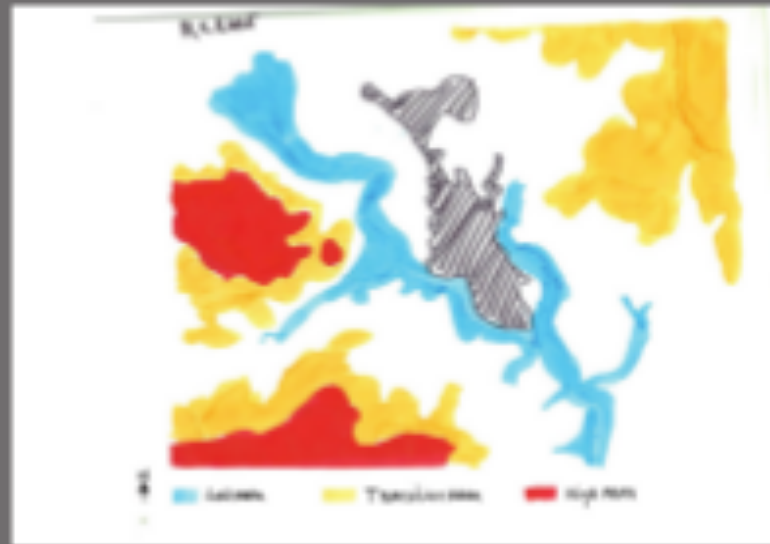
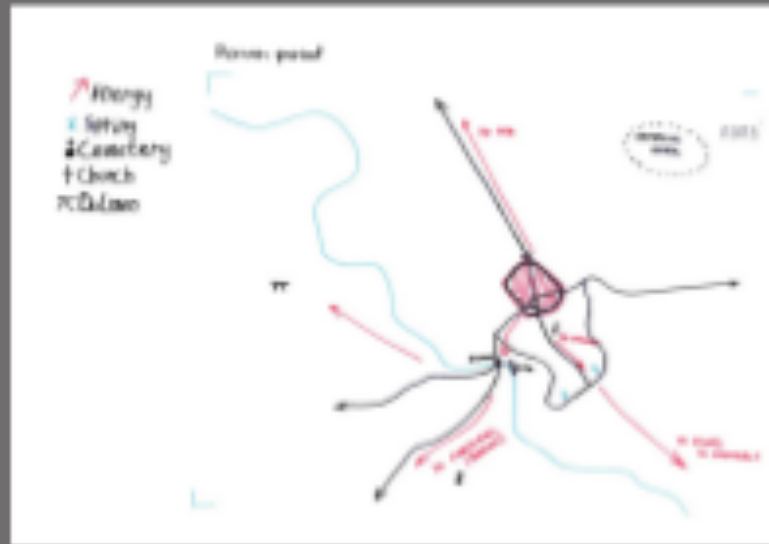
SUMMARY FOODSYSTEM AND DEVELOPMENTS IN LUGO

BY JOS ULIJN AND Ad WOUDESTRA



THE FOODLANDSCAPE OF LUGO!

ANALYSE MAPS FROM THE STUDENTS



The crisis is getting worse, but the people got more aware of the importance of urban agriculture and food. The people are ready to work for urban agriculture. And want to produce more local products, this is in relation to the crisis an opportunity to grow their own food. Not only for private situations but also in public and working spaces. This means people grow their own vegetable in their garden. And even on work they can eat fresh food that grows just outside in the garden or on the roof. But it's not only good for the awareness, it also will give the company more sustainability and a better image. Supermarkets have their own vegetable gardens to sell the product in the stores. So they will be self-supplying. This will increase the sustainability of the store but also the consumers will get healthier food supply.

The public gardens are getting bigger plots so people can grow more vegetables. They will have more food than they can eat. So they can sell all that's left of the vegetables. They will make profit from it. They will pay taxes over the profit. With those profits the government will make and maintain public green. Like apple trees along recreation and pilgrim routes. This way the money that is earned by the government by taxes will go back to more and better green areas. Those areas are situated in the rural and urban area. In the urban areas they are found on the places that are abandoned and will be taken care of by the local people. They will get the responsibility for the land.

When people are more aware of the importance of urban agriculture, they want more education for the process of urban agriculture. This could happen on primary, secondary school, university and even there will be workshops for the generation that already is working. They will learn more about the ways to produce the products.

All these developments will make the city more self-sufficient, sustainable and greener. That's good for the city because of the crisis, this will make the city stable at times of crisis.

CONCERN: FOOD SOVEREIGNTY + SUSTAINABILITY



crisis stops



The city will expand
Lugo will grow to the northwest side and southeast side of the city, along the National Road (N5). It will expand slightly towards the east, in the surroundings of the hospital.

Industry
Because the crisis is decreased people have to spend more money. The need for other ecological products is increasing. A concentration of new industry will be developed, including the industry to process agricultural products produced in the region of Galicia.

Jobs in the city
The industry and other services will provide for jobs for the citizens of Lugo.

Agriculture
The smaller plots are getting combined into larger scale plots.

Food for the city
People buy all their food in large scale supermarkets. The supermarkets buy their products from Galicia and from other parts of Spain (for those products that cannot be produced in Galicia). The quality of the food is improving because there is more money to do research to breed new and better species.

Government
Because the government have more money the role of the government is getting bigger. The public space is changing more

CONCERNS: FOOD SECURITY + EASY ACCESS

more awareness

Central area - inside the wall
Improvement and expansion of existing green areas and creation new ones. Removal of deteriorated buildings to expand these areas. Restoration of historical buildings. Plantation of more trees in green areas.

City
Creation of a green belt around the Wall. Improvement and enlargement of existing green areas and creation new ones.

Expansion area of the city
Located in north and east of the city. Possible construction of buildings with large green areas, and small houses with individual gardens.

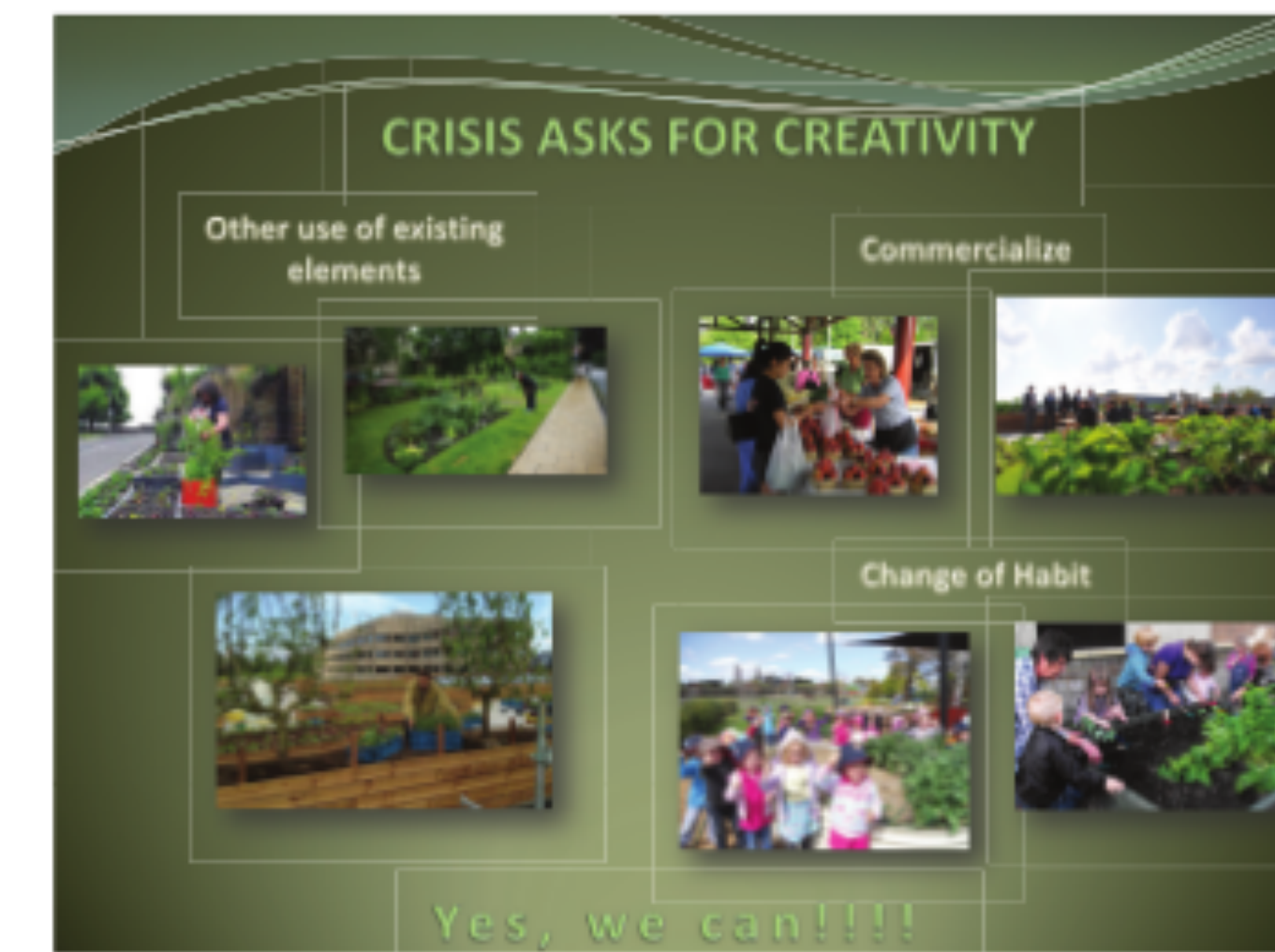
Family vegetable gardens
Located in south and west of the city, around the rivers M'io and Rato. Urban vegetable gardens to supply the basic needs of families.

Surroundings
Small villages with farms which supply of vegetables, milk, meat... to schools, hospitals, restaurants, bars... Camino Primitivo de Santiago

Improvement of the way keeping it clean and care. Plantation of more trees and creation of more natural areas. Improvement signage to promote tourism.

Industrial areas
More sustainable industry using renewable energies like solar, wind energy...

CONCERNS: FOOD SOVEREIGNTY + FOOD HEALTH



crisis continues



less awareness

The situation is bad, the economic crisis on a global level continues in the short term but the consequences and duration on a local level for Lugo grow and last for a much greater period of time. Combined with the increasing lack of awareness and complete disconnect around food production the future looks bleak.

The increasing unemployment levels especially amongst the younger generation leads to less economic development for the city with many businesses leaving the city. On an individual level the quality of life diminishes and stress levels increase. Residents are forced into a corner where they have to act, many emigrate and look for work in other regions of Spain but also in other countries. However there are some small positives to begin with. The residents who stay are forced to co-operate and learn to adapt and work together. Out of these partnerships arise new vegetable gardens and guerrilla gardening in the outskirts of the city but also in small slums that begin to form in the north east fringe of the city. Yes a greater connection with the land is formed but it doesn't help the economic situation as these gardens are purely for personal use and even those cannot provide the food necessary to survive. Furthermore residents have to look for the cheapest possible alternative... The supermarket, leading to the large scale building of supermarkets on the urban fringe. This obviously leads to greater quantity but poorer quality in the food, but more importantly the mass production and transportation that these international supermarket chains use create greater amounts of pollution both locally and globally.

Patterns begin to emerge within Lugo where there is a far greater divide between the rich and the poor. The old medieval centre of the city, especially within the city walls becomes a place for only the very wealthy with more green space, and both residential and commercial uses. The university, a place where only the very rich attend relocates nearer to the more affluent core of the city leaving abandoned buildings on the edge. Squatters not only begin to occupy this area but also the industrial areas on the urban fringe where previous business left. Environmental concerns grow with increasing deforestation in the east simply for personal fire wood to keep warm in the winter, the living conditions within the slums and the many abandoned buildings deteriorates again contributing to the deteriorating environmental situation.

The time frame for this action is difficult to predict, like a black hole where you are not quite sure how deep and how great the consequences can actually be. But one thing is for certain, the deteriorating economic situation and lack of awareness point to only one thing. A bleak future for the city of Lugo.

CONCERNS: FOOD JUSTICE + AVAILABILITY