

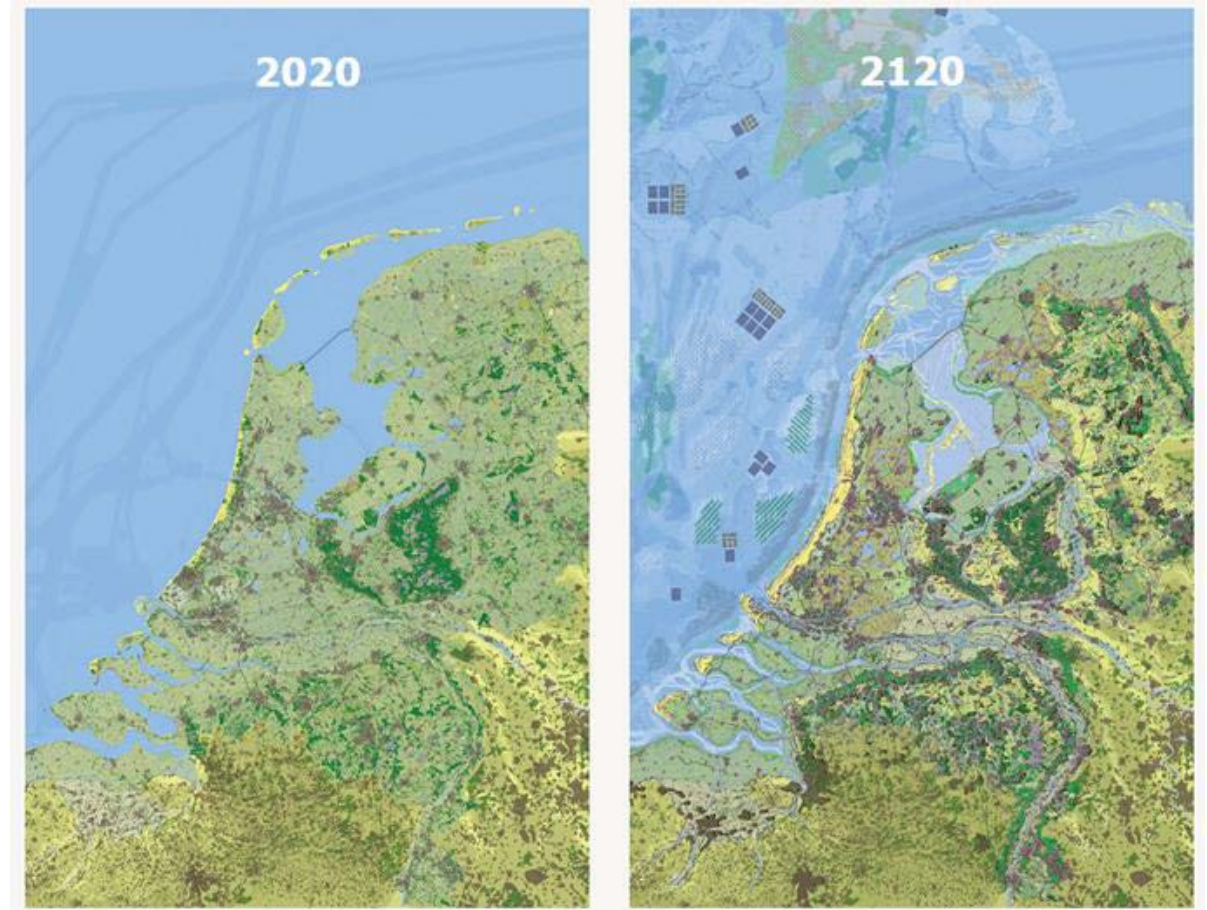
RESEARCH THROUGH DESIGN

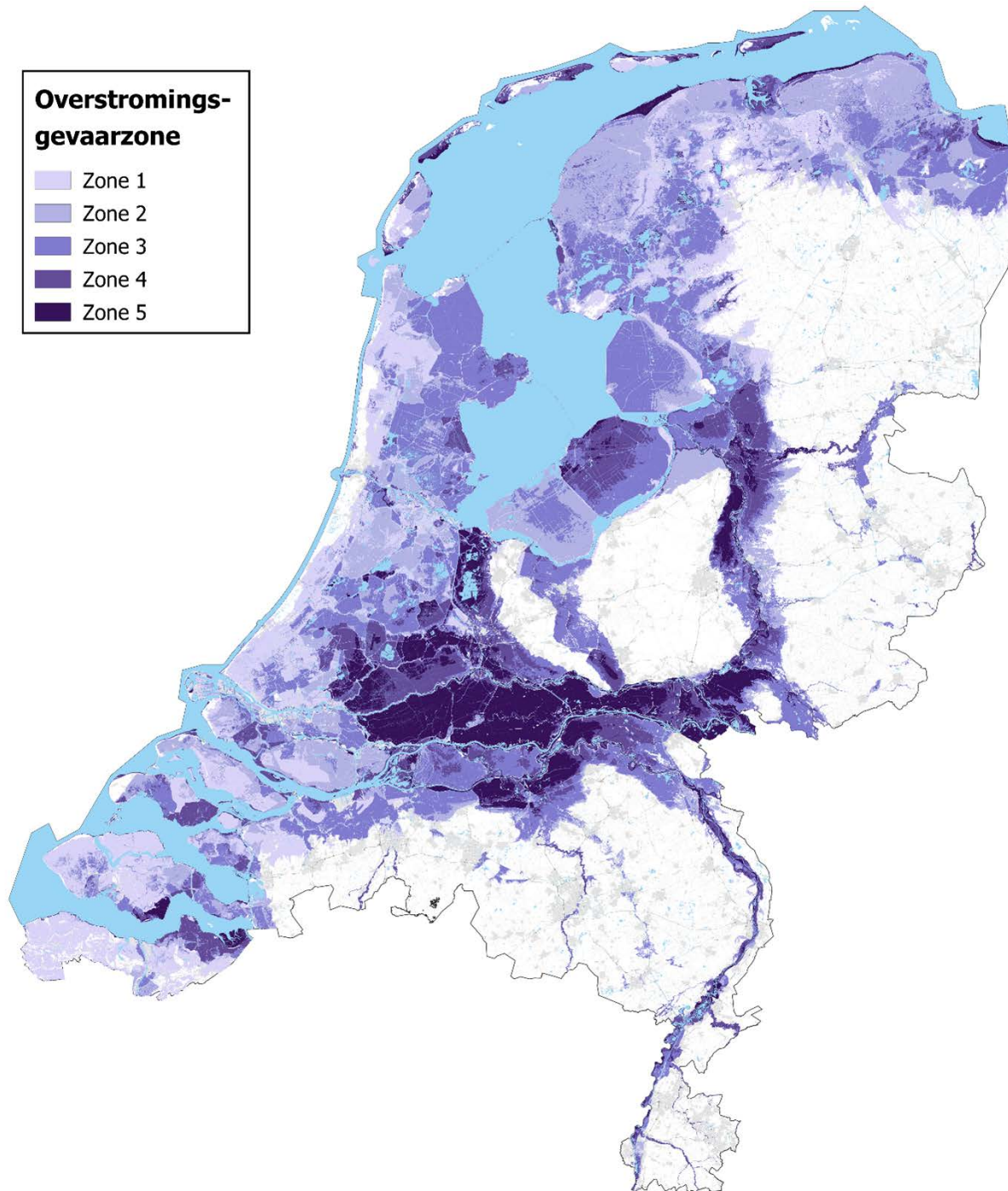
- NL2120

Perspective of climate adaptation

So deal with:

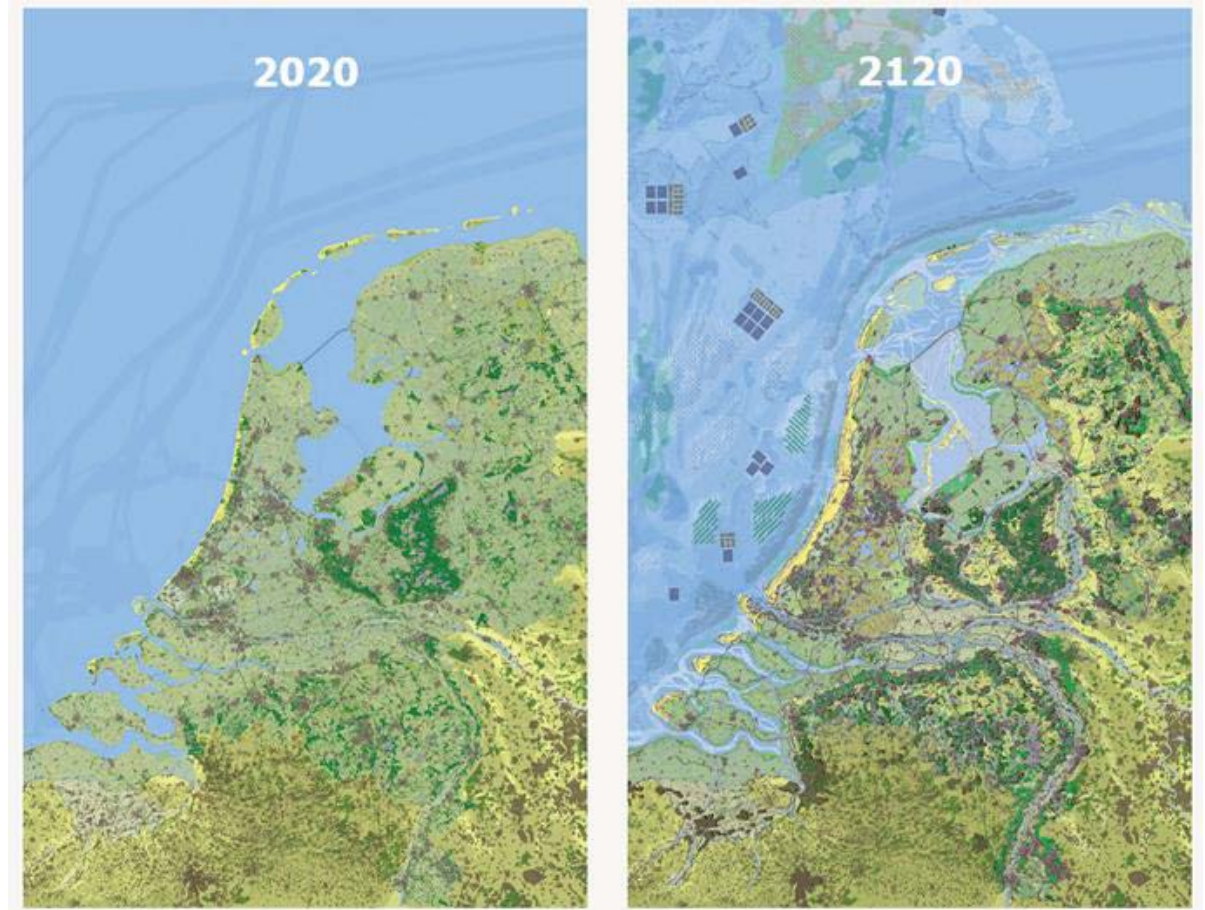
- Sea level: 1.5m higher
- River Rhine: rain river
- Urban temperature: 3 to 4 degrees higher





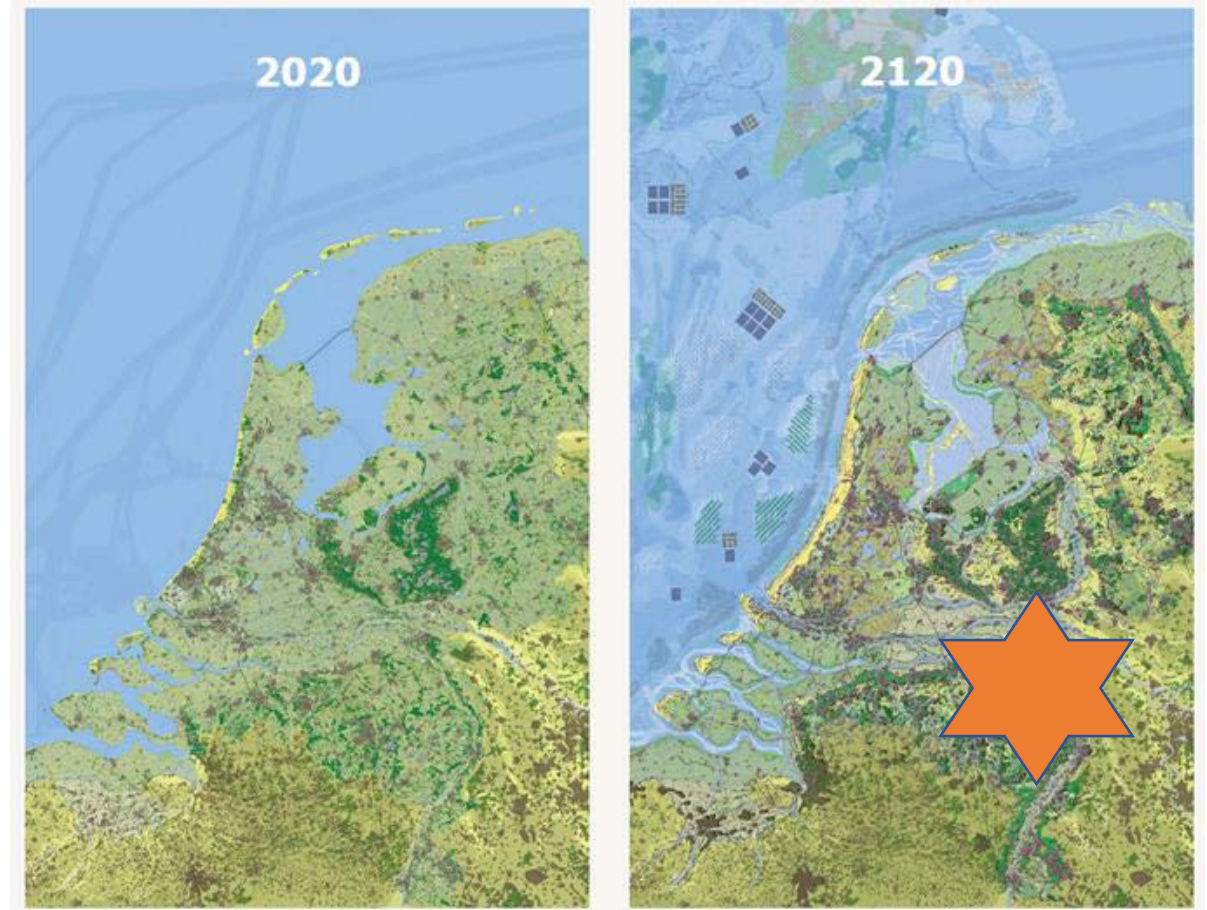
NL2120 scenario

- Positive
 - Adaptive
 - Inspiring
 - Realistic
-
- Principle: follow the existing natural system

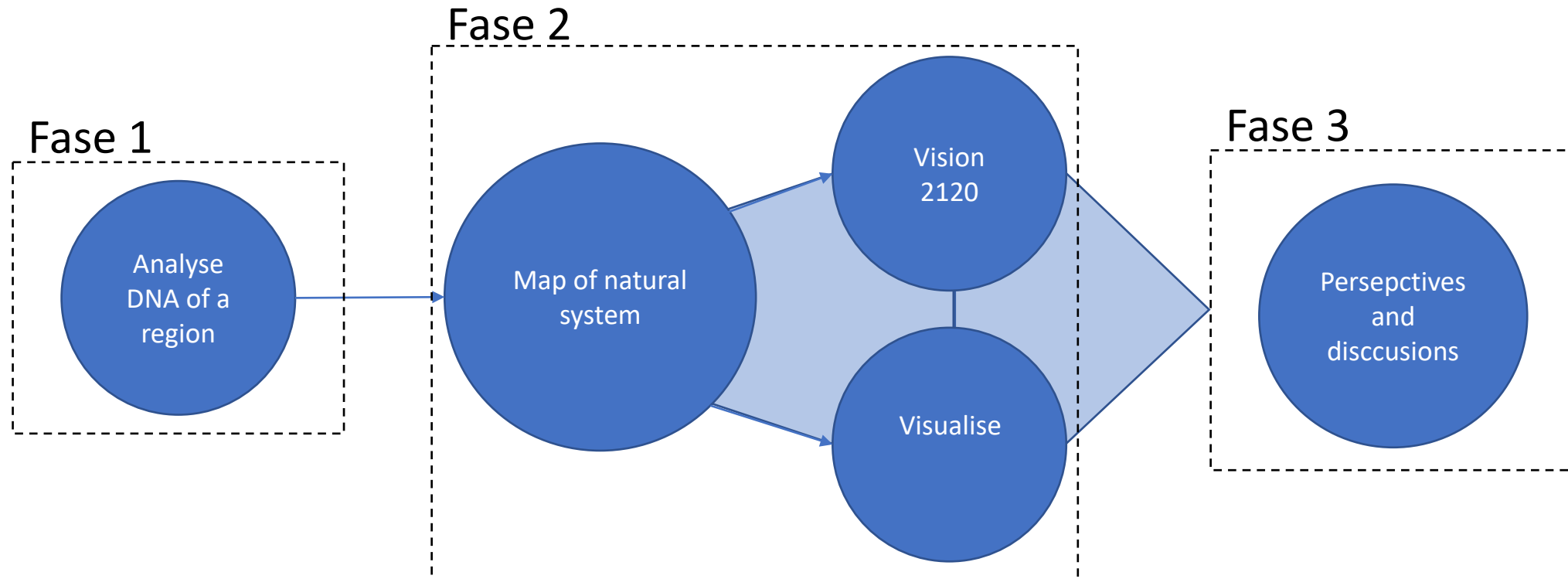


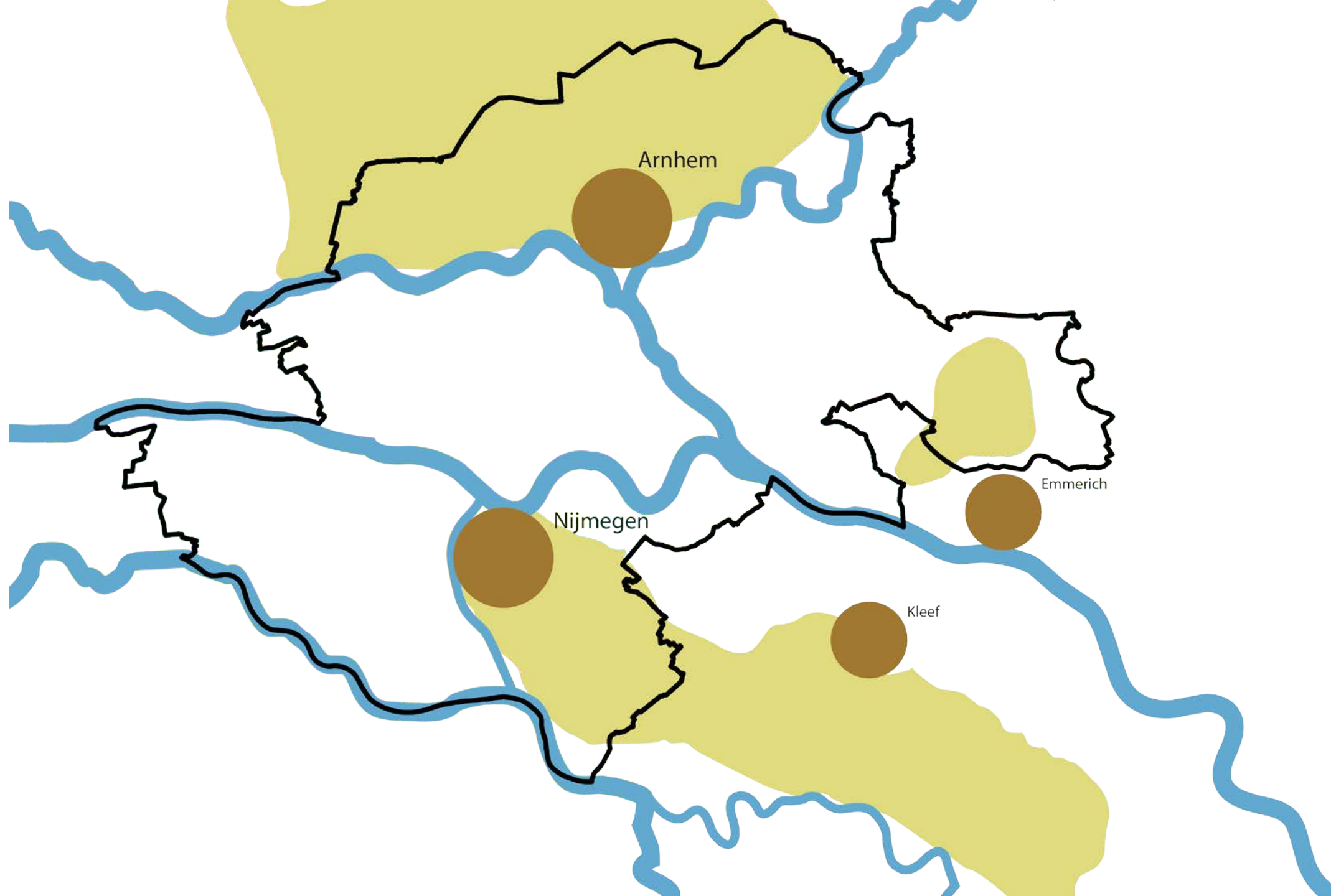
NL2120 scenario: Arnhem

- Positive
- Adaptive
- Inspiring
- Realistic



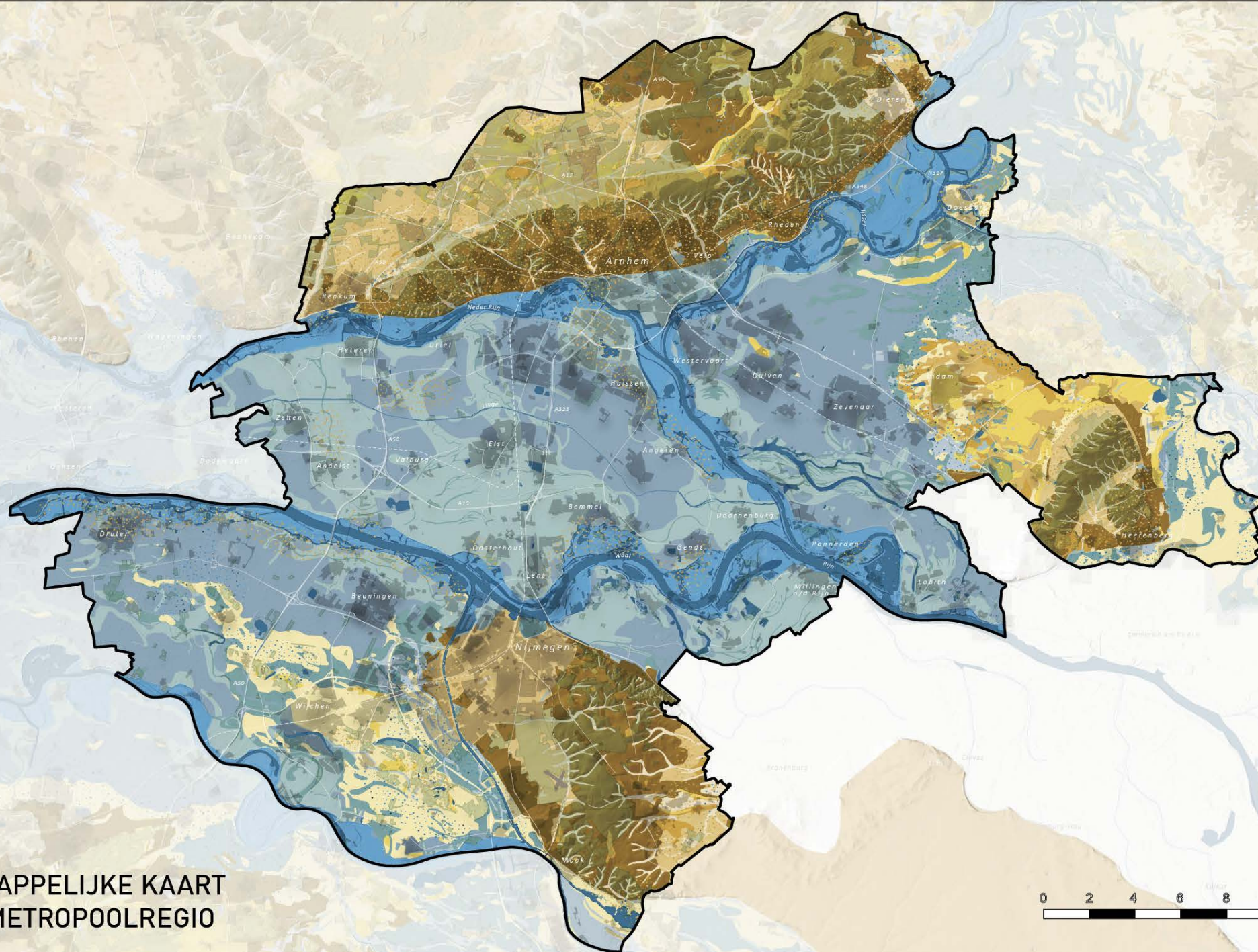
Approach



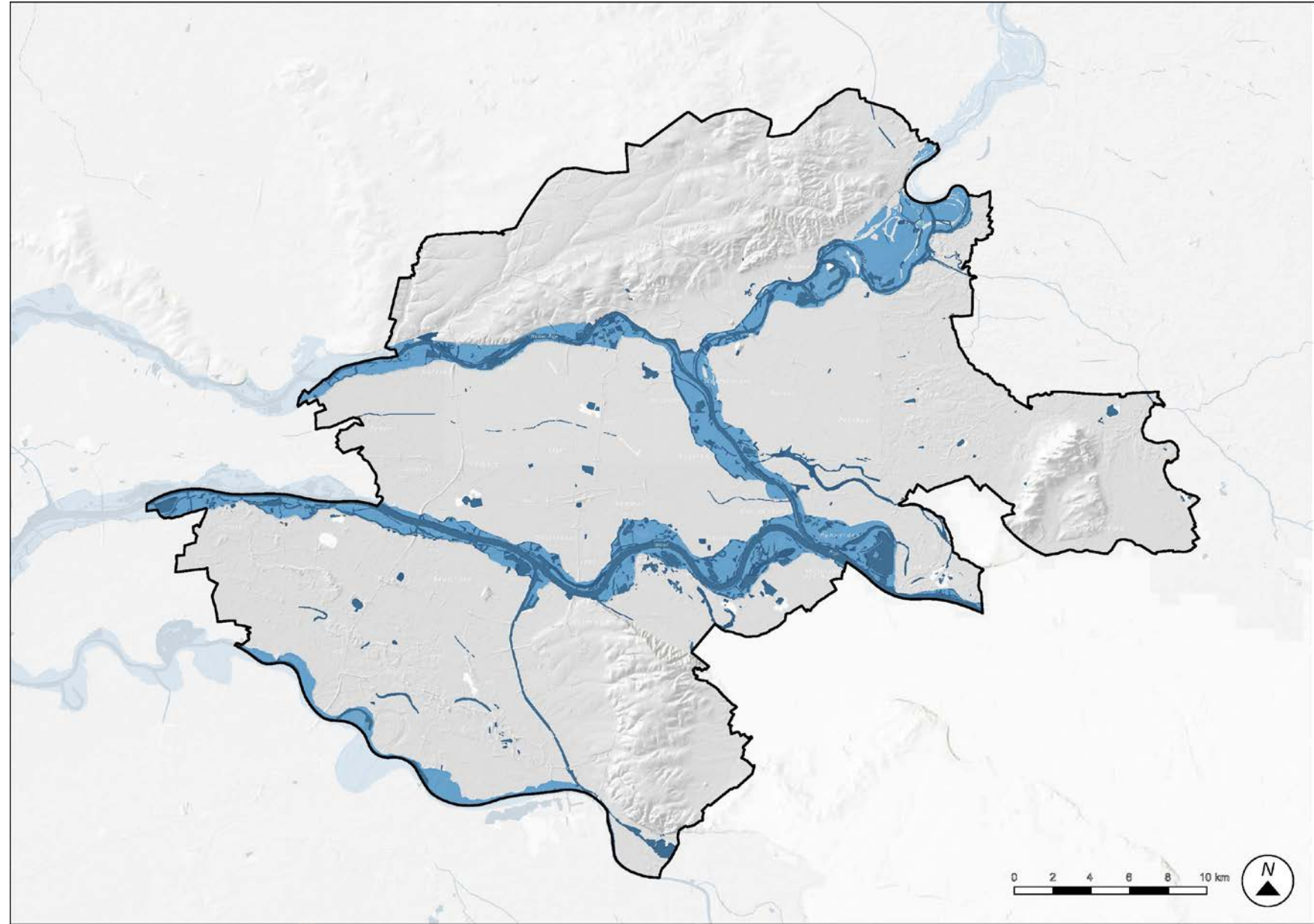


LANDSCHAPPELIJKE KAART
GROENE METROPOOLREGIO

0 2 4 6 8 10 km

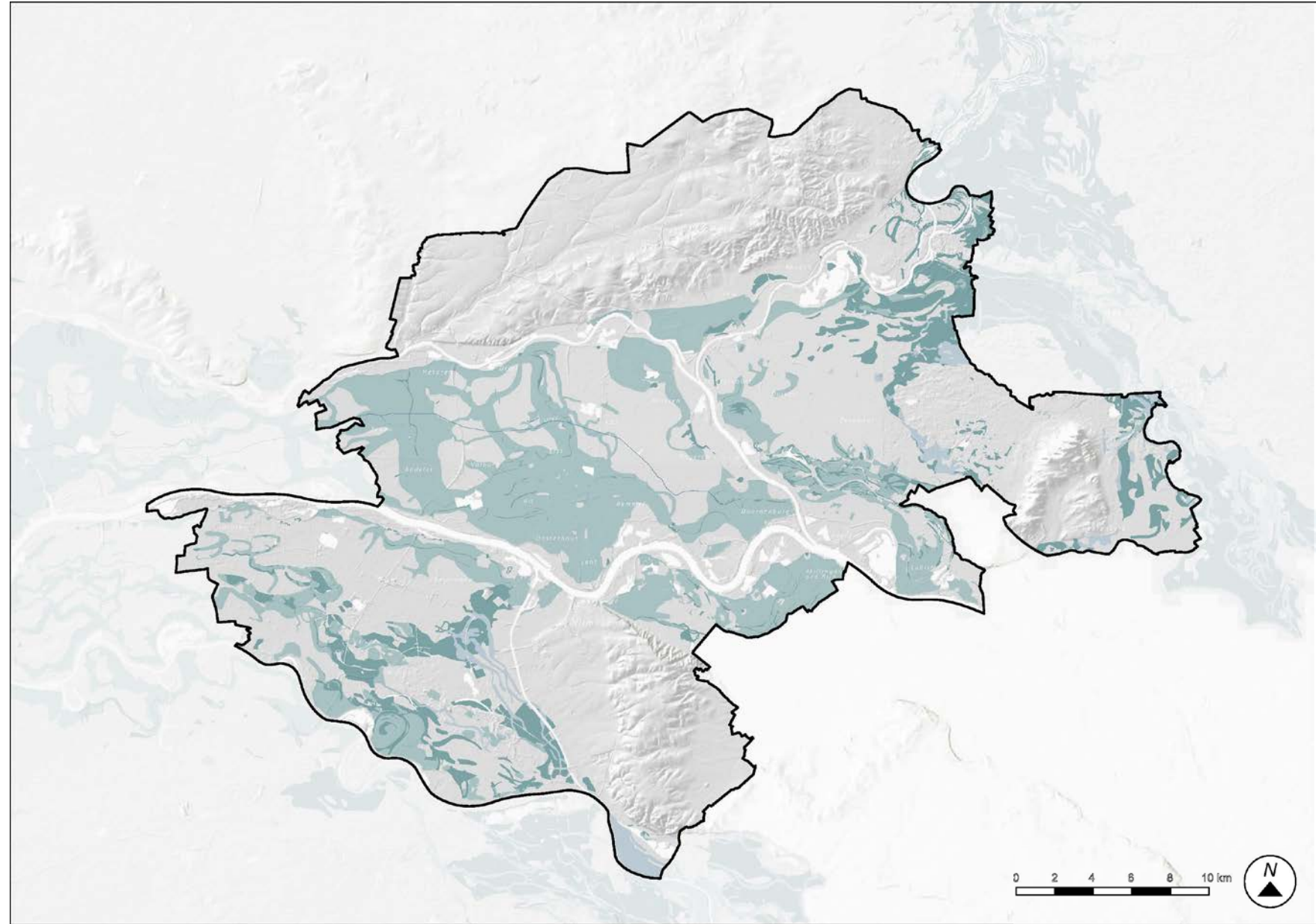


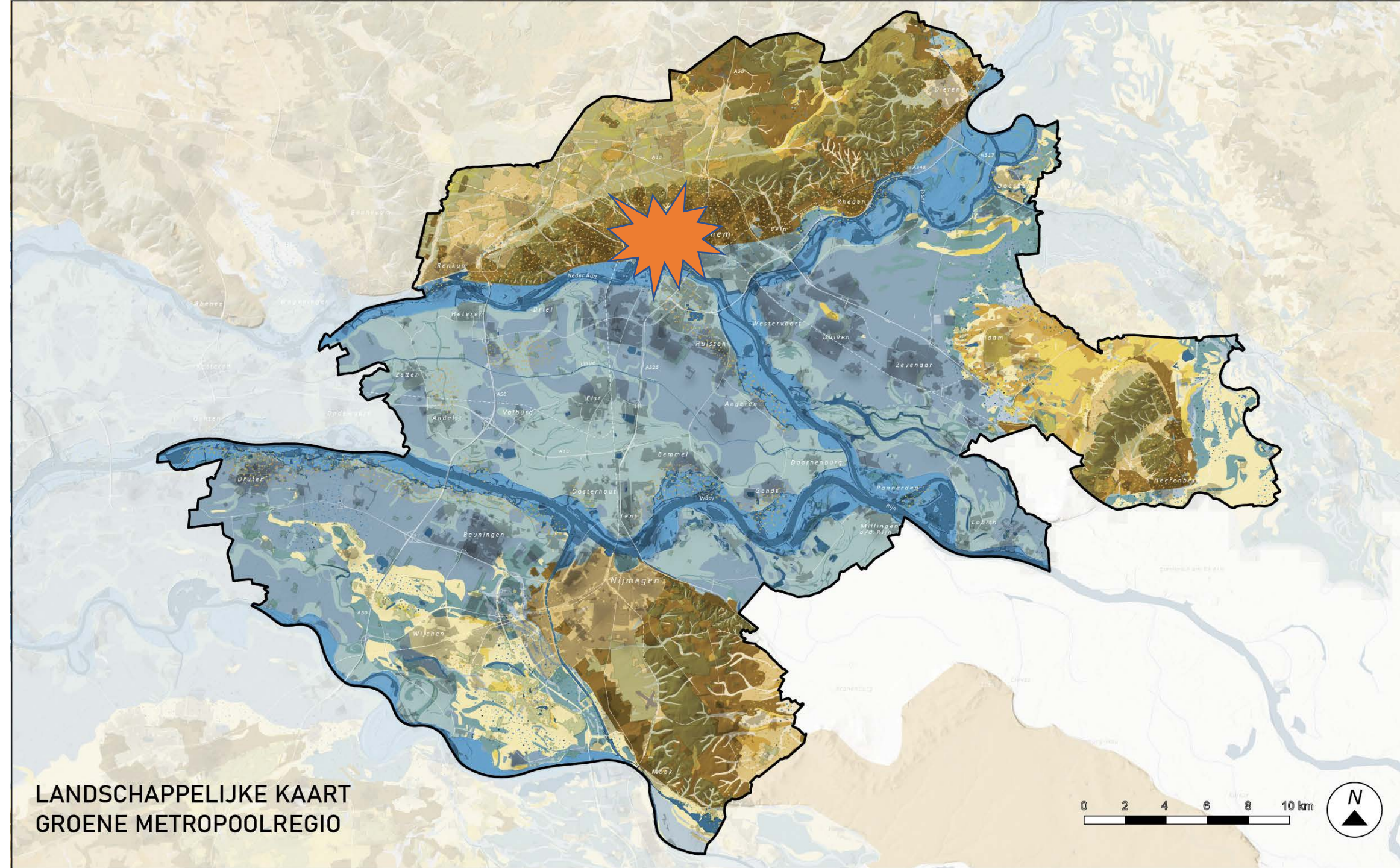
Select a future for the rivers





Best agricultural soils

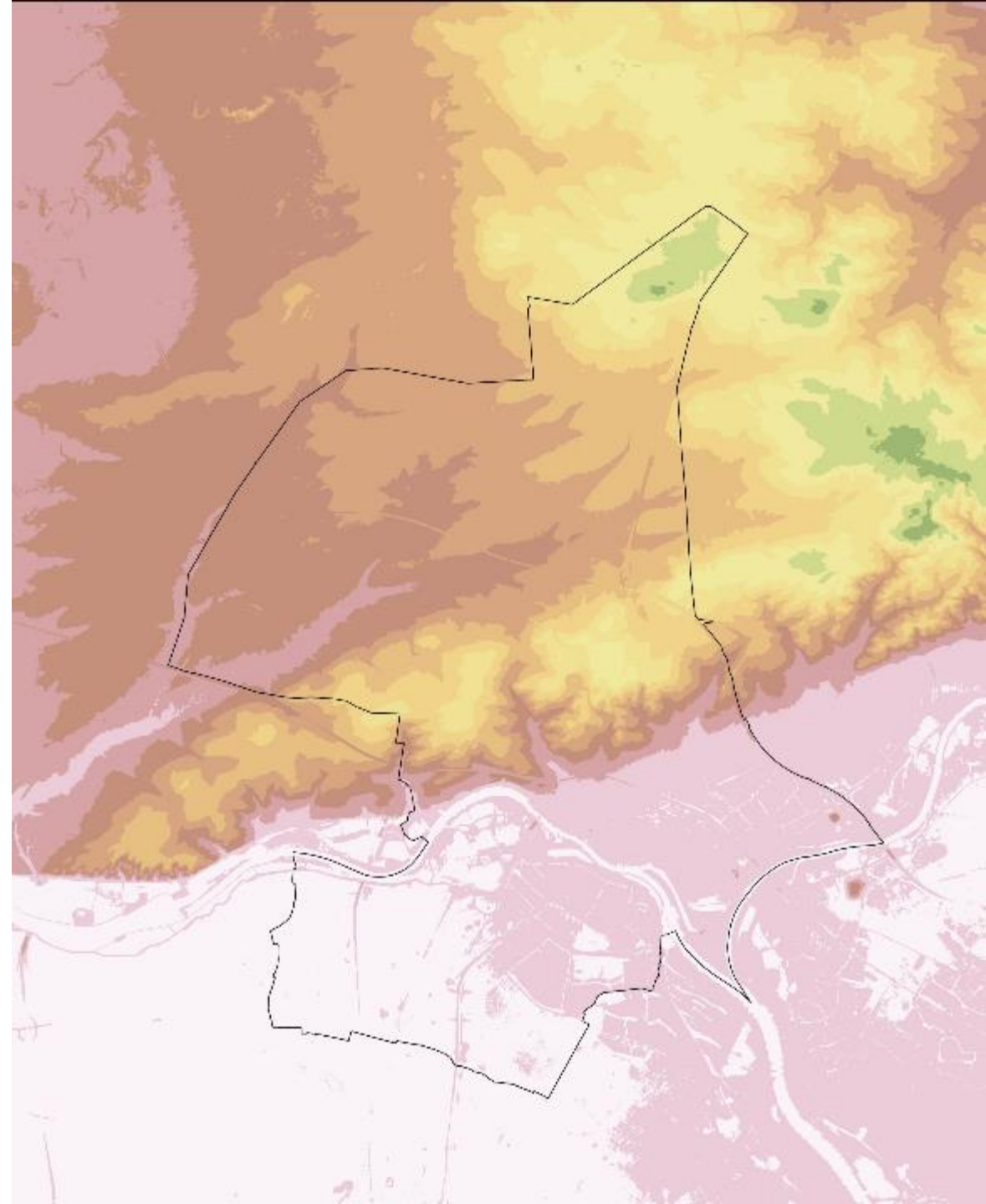




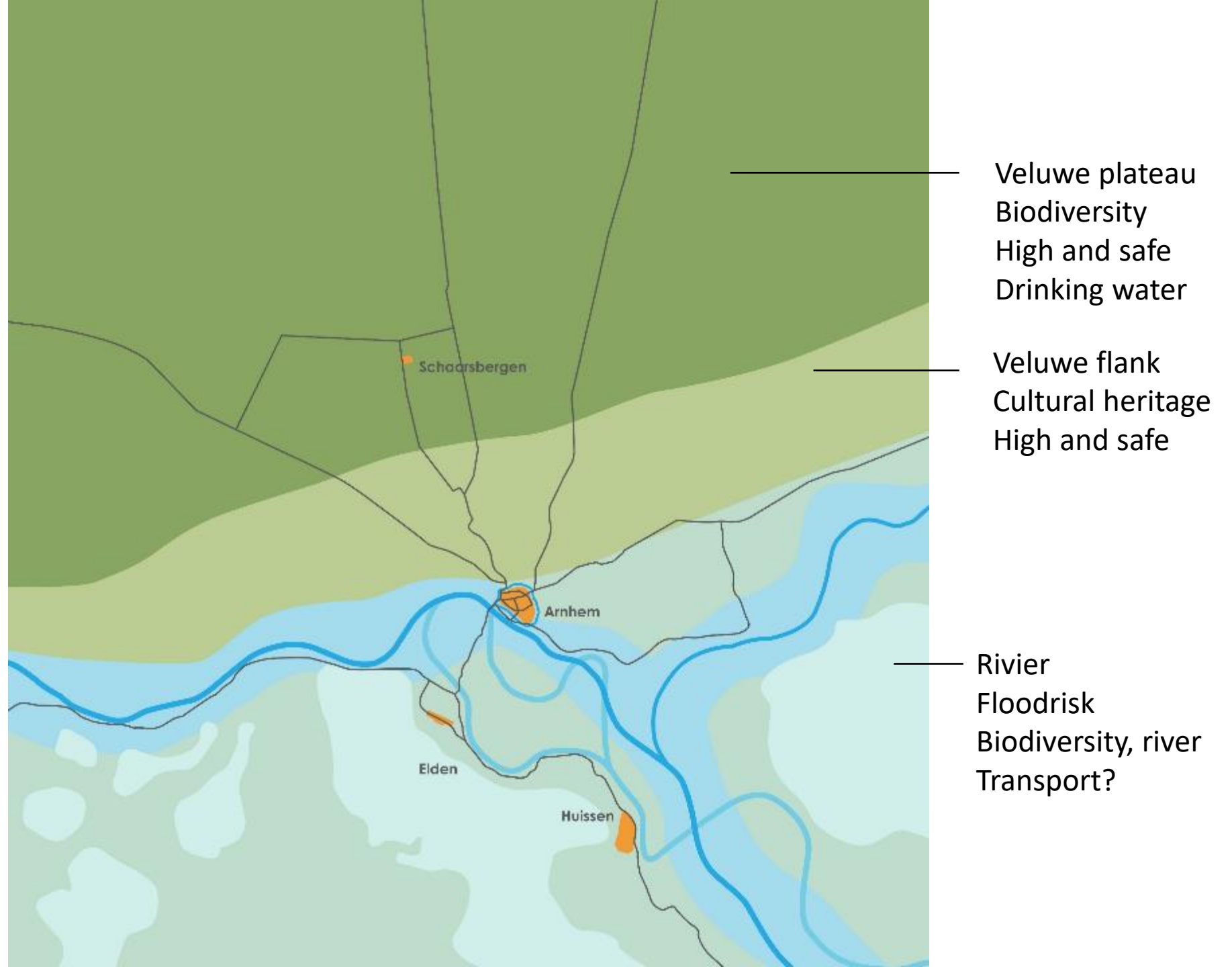
LANDSCHAPPELIJKE KAART
GROENE METROPOOLREGIO



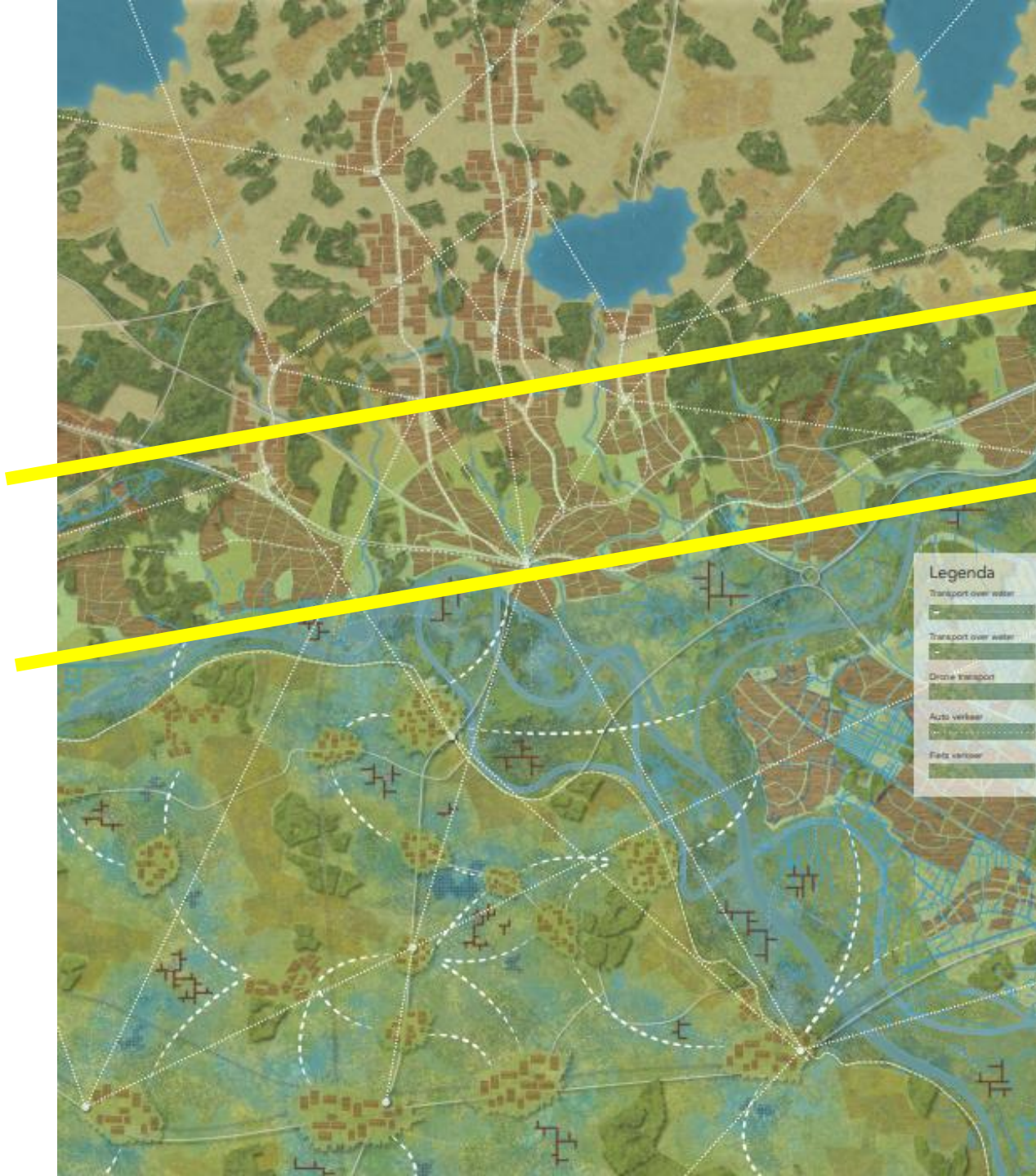
Case study Arnhem



Landschaps typen



Visie Arnhem 2120



Veluwe plateau,
push moraine

Veluwe fringe

River area

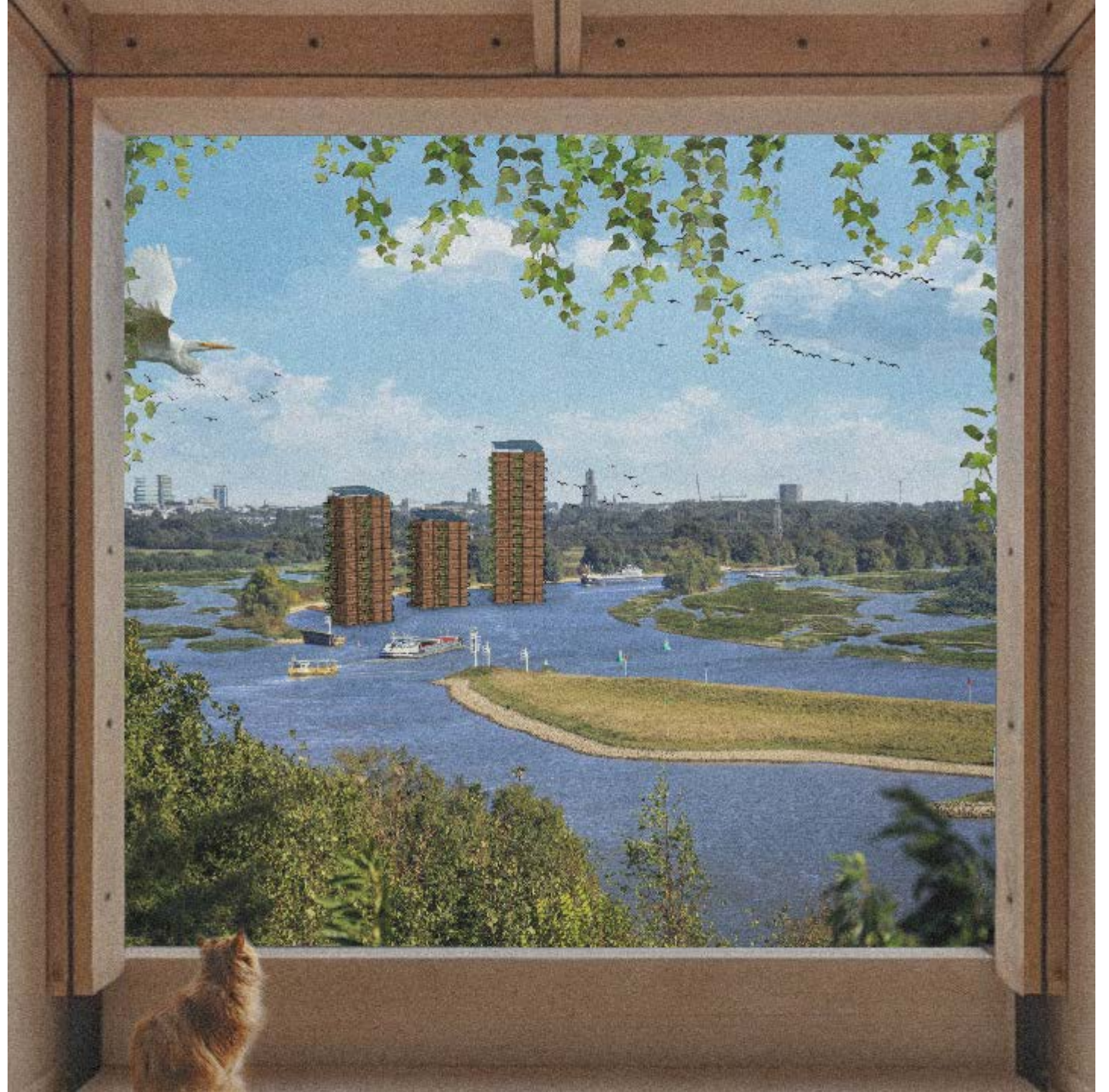
A surreal landscape where nature and technology coexist. In the background, three large white wind turbines stand against a blue sky with scattered white clouds. A flock of birds flies across the sky. Two drones are visible: one larger drone with a yellow body and four rotors, and a smaller one. In the foreground, a lush green field is filled with tall grass and purple flowers. On the left, a group of deer with large antlers stands near a large tree. In the center, a small grey dog stands in the grass. To the right, a calm body of water reflects the sky, with several ducks swimming. In the distance, a line of small, rustic wooden huts is visible. The word "Plateau" is written in white text across the center of the image.

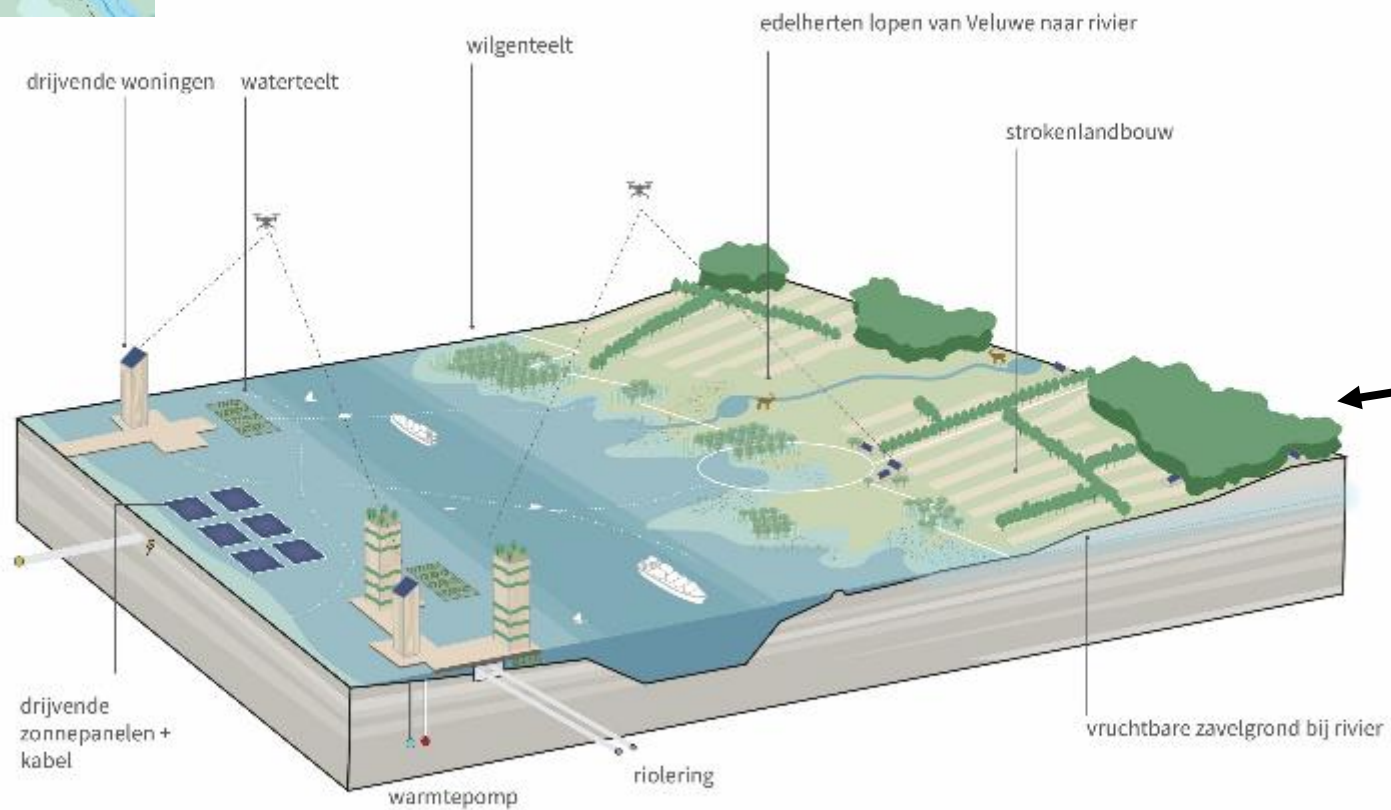
Plateau

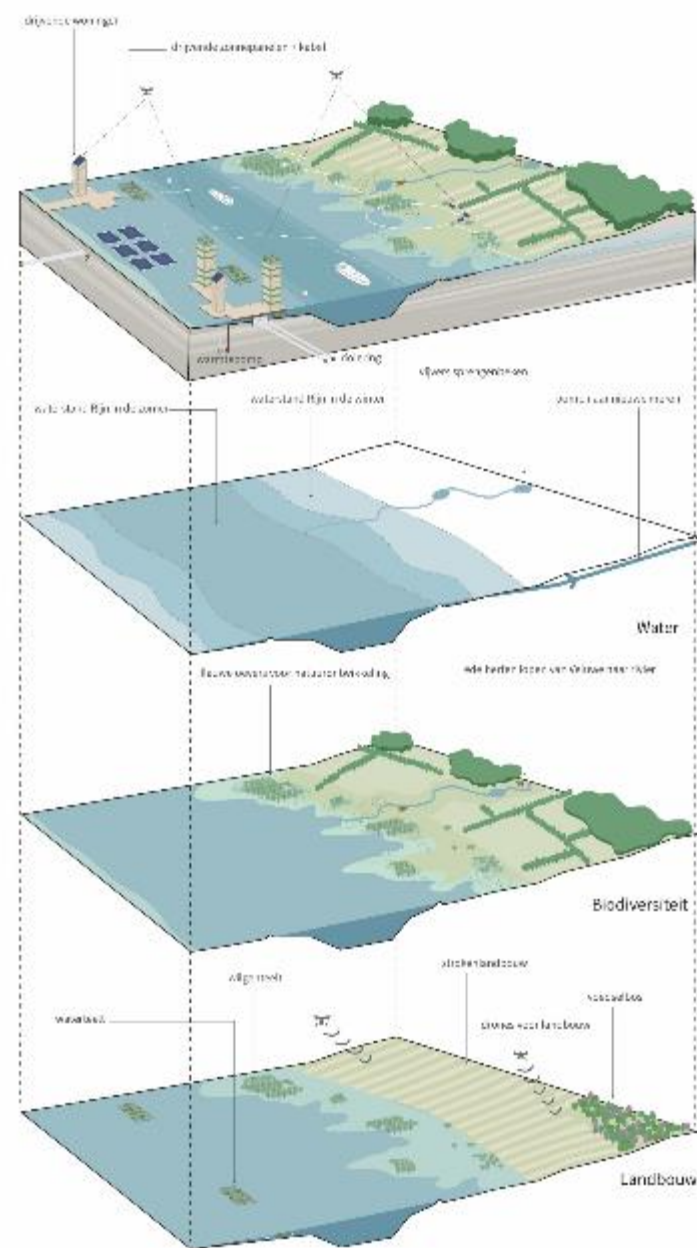
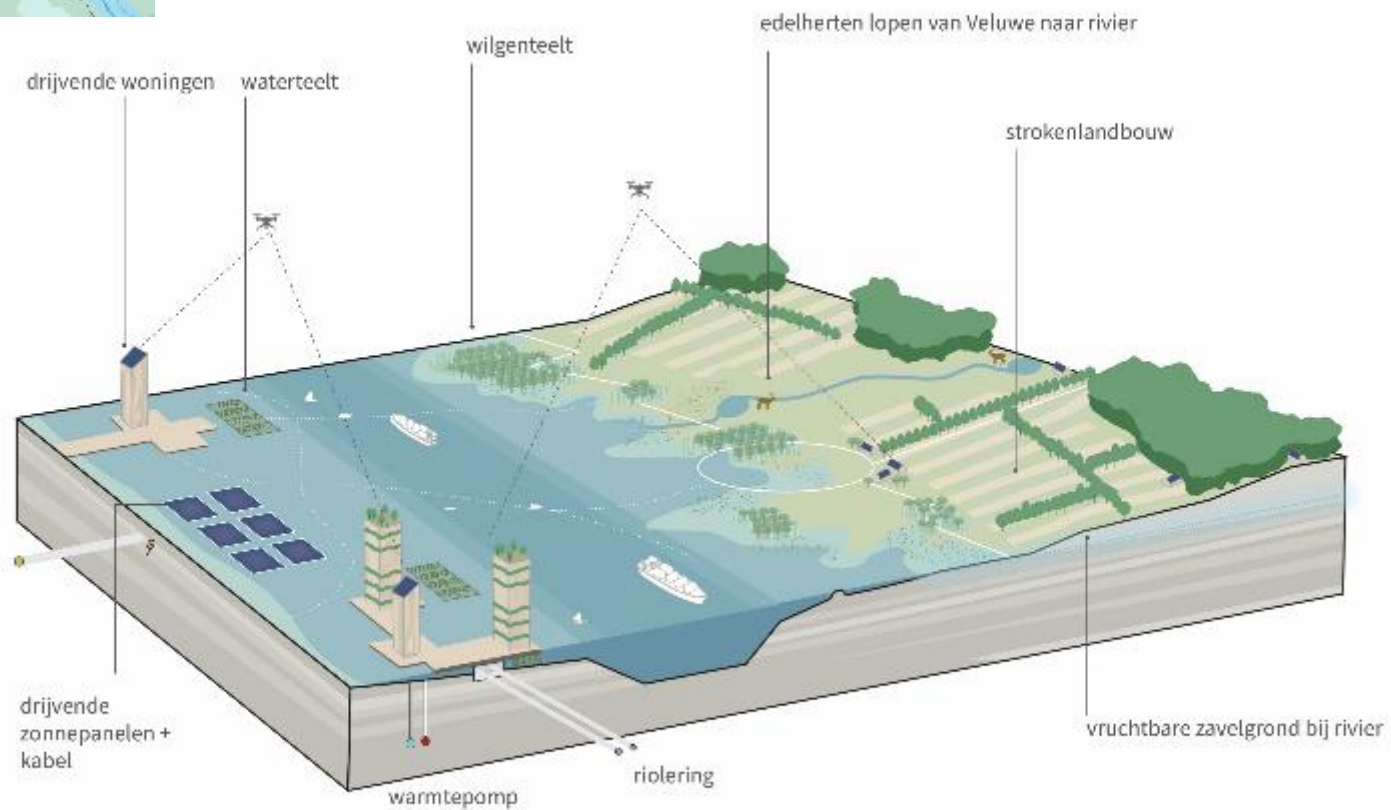


Fringe

Rivierengebied



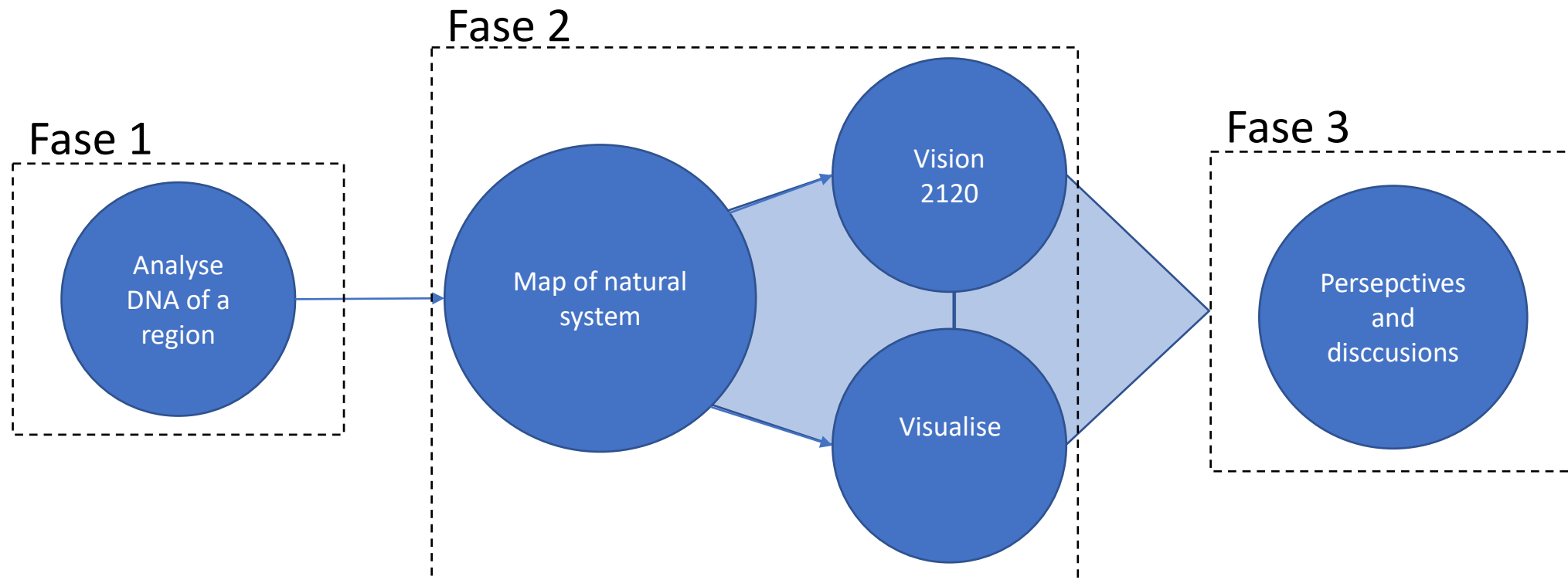




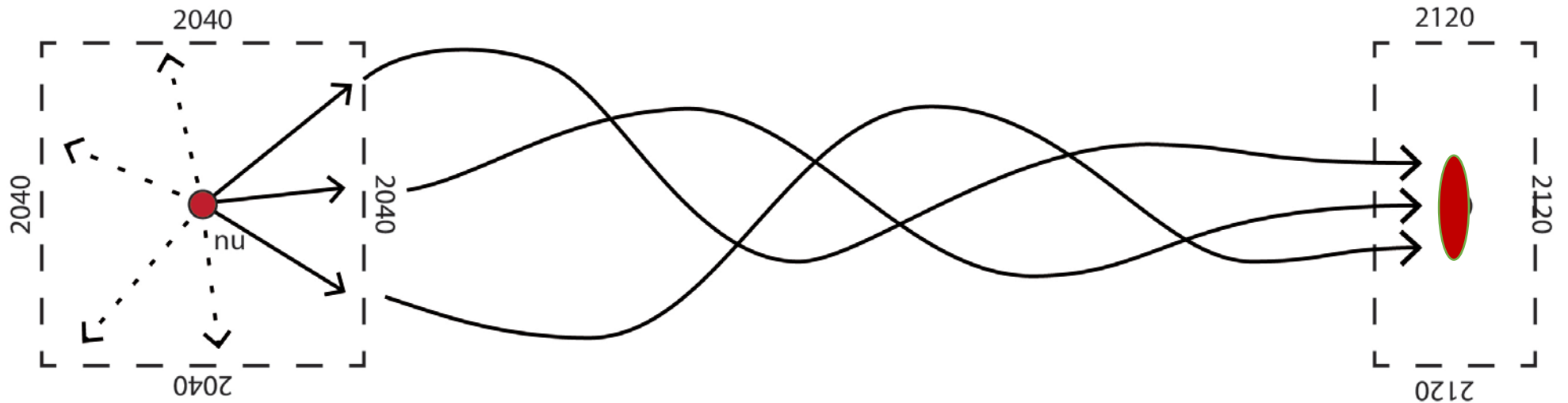
Arnhem 2120

1. National level: Redirect urban planning to the East
2. Roads narrowed, greene, self dtiving cars, drone transport.
3. Routes for cool air from the forest
4. One river and river metropole Arnhem Nijmegen
6. Nature 2100: combining dela nature with Veluwe

Approach

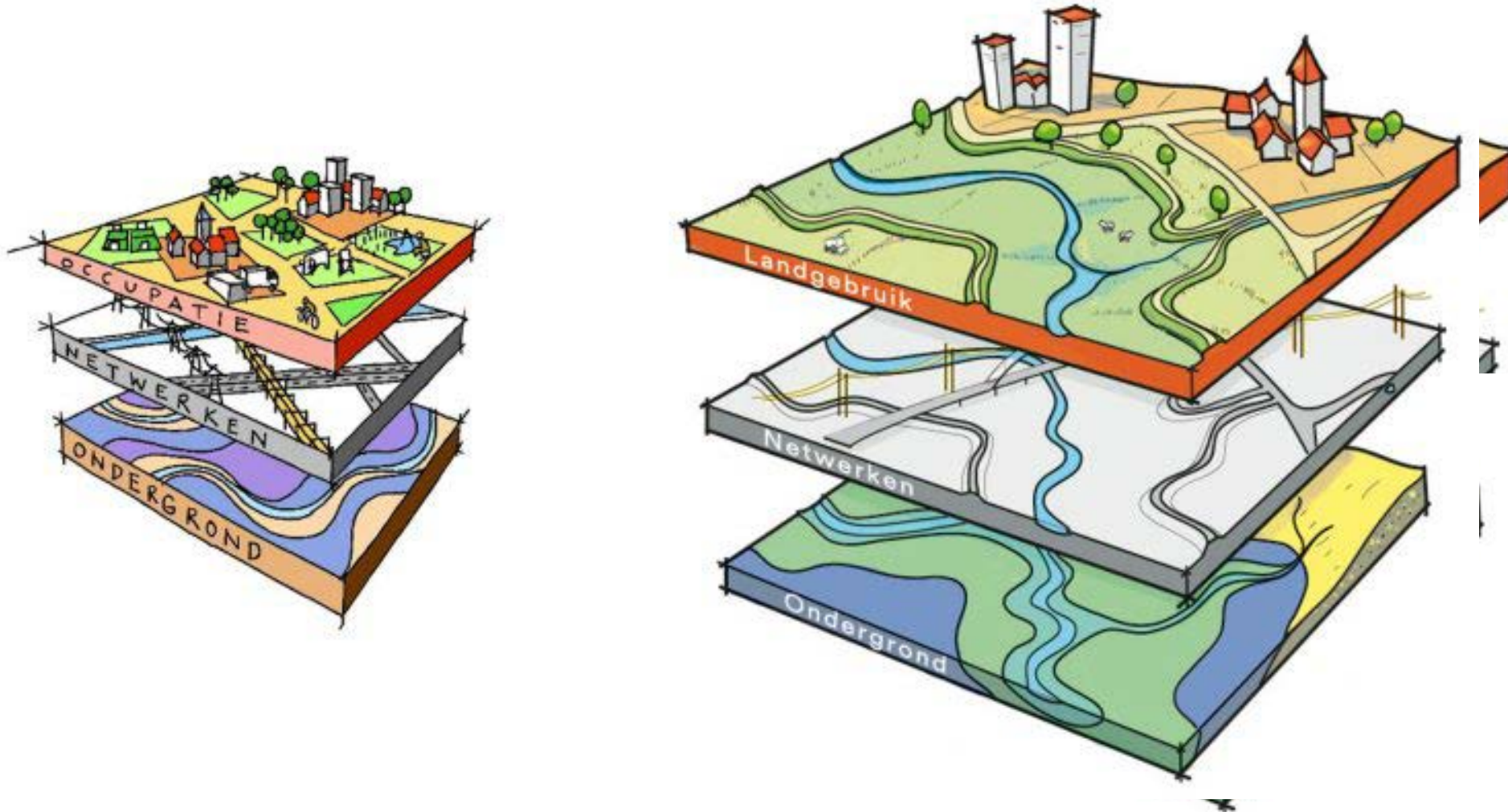


Conclusion 1: design a long term vision for discussion

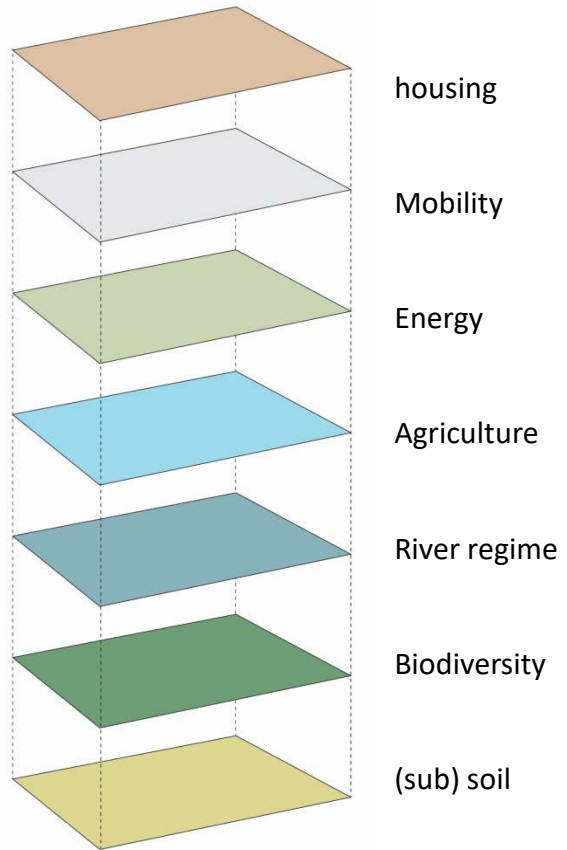


- Ver vooruitblikken is nodig én biedt kansen:
 - ontstijging huidige dossiers/problematiek
 - voedingsbodemp voor planvorming nu

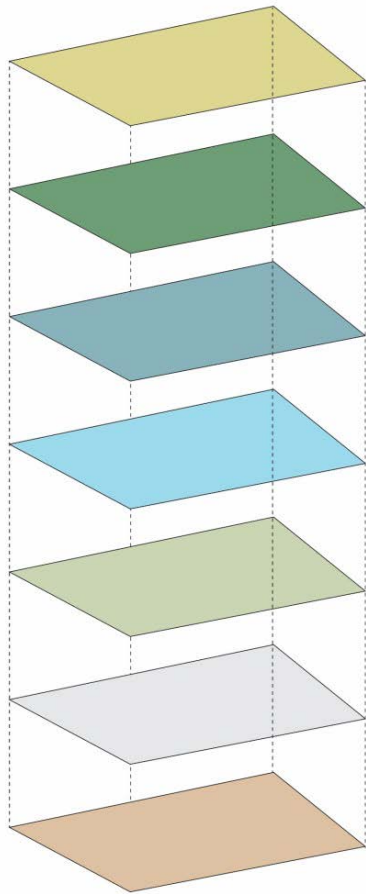
Conclusion 2: Re-install the natural system



What to plan first?



What to plan first? The natural system!



(sub) soil

biodiversity

River regime

Agriculture

energy

mobility

Housing, working

Conclusion 3: actively involve politicians



If you know that:

- The housing areas that you build now are still there in 100 years
- Sea level will be 1.5m higher
- Rivers will be sometimes dry and sometimes over-full and gorgeous
- City temperature will be degrees higher

Do you think that you do enough now if you supply every new house with a solar panel, an extra tree and a rain barrel?

Galicia

- National level: Redirect urban development to Galicia
 - Use existing highway structure for economic and housing redevelopment.
Avoid valleys and coastal deltas
 - Restore 10.000 abandoned villages: 300 inhabitants as an average

Galicia

- National level: Redirect urban development to Galicia
 - Use existing highway structure for economic and housing redevelopment.
Avoid valleys and coastal deltas
 - Restore 10.000 abandoned villages
- Make cities greener

Galicia

- National level: Redirect urban development to Galicia
 - Use existing highway structure for economic and housing redevelopment.
Avoid valleys and coastal deltas
 - Restore 10.000 abandoned villages
- Make cities greener
- Natura 2100.
 - Restore robust nature connecting coastal-, river- and mountains.
 - Include ecosystem services in planning (abandoned villages)

Galicia

- National level: Redirect urban development to Galicia
 - Use existing highway structure for economic and housing redevelopment.
Avoid valleys and coastal deltas
 - Restore 10.000 abandoned villages
- Make cities greener
- Natura 2100.
 - Restore robust nature connecting coastal-, river- and mountains.
 - Include ecosystem services in planning (abandoned villages)
- Agriculture in valleys (water proof production) and hilly areas (depend on soils)

Galicia

- National level: Redirect urban development to Galicia
 - Use existing highway structure for economic and housing redevelopment. Avoid valleys and coastal deltas
 - Restore 10.000 abandoned villages
- Make cities greener
- Natura 2100.
 - Restore robust nature connecting coastal-, river- and mountains.
 - Include ecosystem services in planning (abandoned villages)
- Agriculture in valleys (water proof production) and hilly areas (depend on soils)
- Relax: in 2120 Godello can be provided to you by The Netherlands

The background image shows a person's face, partially obscured by a complex digital overlay. On the right side, a large, detailed eye is superimposed, surrounded by glowing blue circles and lines, suggesting a high-tech or artificial intelligence theme. To the left of the eye, there are various icons: a group of four stylized human figures, a dashed arrow pointing left, and a world map. The entire scene is overlaid with white circuit-like lines and binary code (0s and 1s).

**Dare to start to
think about the
future!**